

Product datasheet for **SM2052FS**

Clec7a Rat Monoclonal Antibody [Clone ID: 2A11]

Product data:

Product Type:	Primary Antibodies
Clone Name:	2A11
Applications:	FC
Recommended Dilution:	Flow Cytometry.
Reactivity:	Mouse
Host:	Rat
Isotype:	IgG2b
Clonality:	Monoclonal
Immunogen:	Dectin-1 transfected NIH3T3 cells and recombinant soluble Dectin-1.
Specificity:	Recognises Murine beta-Glucan Receptor (Dectin-1). Dectin-1 is predominantly expressed by cells of the monocyte/macrophage and neutrophil lineages, but also at lower levels by dendritic cells and a subpopulation of T cells. This antibody inhibits the binding of zymosan to macrophages via the beta-glucan receptor. The low endotoxin version SM2025LE is recommended for Functional Studies.
Formulation:	PBS, pH 7.4 containing 0.09% Sodium Azide as preservative and 1% BSA as stabilizer. Label: FITC State: Liquid purified IgG fraction. Label: Fluorescein Isothiocyanate Isomer 1
Concentration:	lot specific
Purification:	Affinity Chromatography on Protein G.
Conjugation:	FITC
Storage:	Store the antibody undiluted at 2-8°C for one month or (in aliquots) at -20°C for longer. This product is photosensitive and should be protected from light. Should this product contain a precipitate we recommend microcentrifugation before use. Avoid repeated freezing and thawing.
Stability:	Shelf life: one year from despatch.
Gene Name:	C-type lectin domain family 7, member a



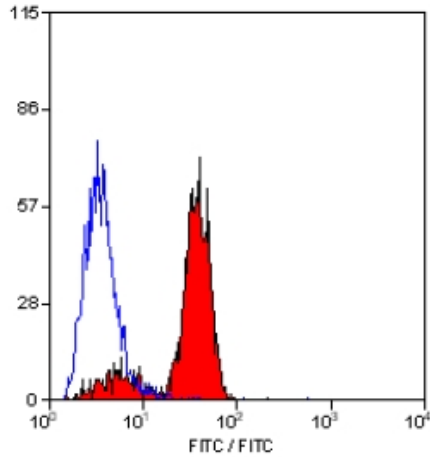
[View online »](#)

Database Link: [Entrez Gene 56644 Mouse](#)
[Q6QLQ4](#)

Background: As a major leucocyte receptor for beta-glucan this molecule may have a key role in the immunomodulatory effects of beta-glucans and in the host response to fungal pathogens. Recent work has shown that Dectin-1 may stimulate reactive oxygen production in macrophages via the protein tyrosine kinase known as Syk.

Synonyms: Beta-glucan receptor, BGR, CLECSF12, DECTIN1

Product images:



Staining of mouse peripheral blood granulocytes with Rat Anti Mouse Beta Glucan Receptor:FITC.