

Product datasheet for **SM2036R**

CD158 / KIR2D Mouse Monoclonal Antibody [Clone ID: NKVFS1]

Product data:

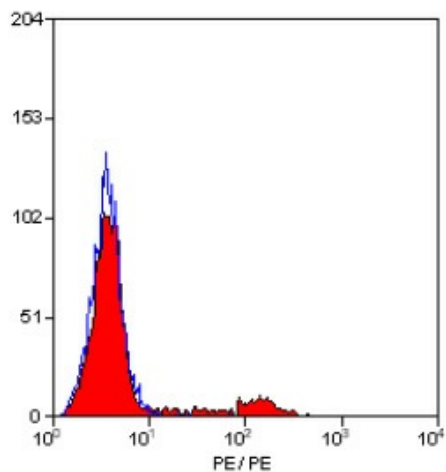
Product Type:	Primary Antibodies
Clone Name:	NKVFS1
Applications:	FC
Recommended Dilution:	Flow Cytometry: Use 10 µl of neat antibody to label 10e6 cells in 100 µl.
Reactivity:	Human
Host:	Mouse
Isotype:	IgG1
Clonality:	Monoclonal
Specificity:	This antibody recognizes KIR2D members of the killer cell immunoglobulin (Ig)-like receptor (KIR) family, CD158a, CD158b and P50.3. Clone NKVFS1 specifically recognizes the long and short forms CD158a and CD158b (KIR2DL, KIR2DS1 and KIR2DS2 respectively) and also p50.3 (KIR2DS4). The clone is reported to have functional activity, activating NK cell cytotoxicity via KIR2DS and inhibiting via KIR2DL forms. We recommend the use of SM2036A for this purpose.
Formulation:	PBS, pH 7.4 containing 0.09% Sodium Azide, 5% Sucrose and 1% BSA Label: PE State: Lyophilized purified IgG fraction. Label: R. Phycoerythrin (RPE)
Reconstitution Method:	SM2036R: Restore with 1 ml distilled water. SM2036RT: Restore with 0.25 ml distilled water.
Purification:	Affinity Chromatography on Protein G
Conjugation:	PE
Storage:	Prior to and following reconstitution store the antibody at 2-8°C. DO NOT FREEZE! This product is photosensitive and should be protected from light.
Stability:	Shelf life: one year from despatch.
Background:	KIR2D family members are cell surface glycoproteins with two Ig domains, which are expressed on natural killer cells and some T cells.



[View online »](#)

Synonyms: CD158a, CD158b, CD158i, KI2DL1, KIR2DL3, KIR2DS4

Product images:



Staining of Human peripheral blood lymphocytes with Mouse Anti Human KIR antibody RPE conjugated (SM2036R).