

Product datasheet for **SM2036PS**

CD158 / KIR2D Mouse Monoclonal Antibody [Clone ID: NKVFS1]

Product data:

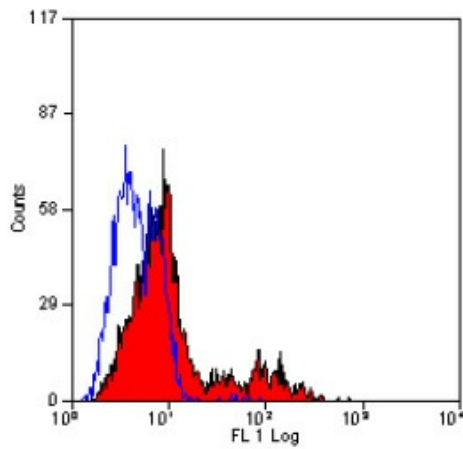
Product Type:	Primary Antibodies
Clone Name:	NKVFS1
Applications:	ELISA, FC, IP, WB
Recommended Dilution:	Flow Cytometry: 1/50 - 1/100; Use 10µl of the suggested working dilution to label 10e6 cells in 100µl. ELISA. Immunoprecipitation. Western Blot.
Reactivity:	Human
Host:	Mouse
Isotype:	IgG1
Clonality:	Monoclonal
Specificity:	This antibody recognises KIR2D members of the killer cell immunoglobulin (Ig)-like receptor (KIR) family, CD158a, CD158b and P50.3 (CD158I). Clone NKVFS1 specifically recognises the long and short forms CD158a and CD158b (KIR2DL, KIR2DS1 and KIR2DS2 respectively) and also p50.3 (KIR2DS4). The clone is reported to have functional activity, activating NK cell cytotoxicity via KIR2DS and inhibiting via KIR2DL forms. We recommend the use of SM2036A for this purpose.
Formulation:	PBS, pH7.4 containing 0.09% Sodium Azide State: Aff - Purified State: Liquid purified IgG
Concentration:	lot specific
Purification:	Affinity chromatography on Protein G
Conjugation:	Unconjugated
Storage:	Store the antibody undiluted at 2-8°C for one month or (in aliquots) at -20°C for longer. Avoid repeated freezing and thawing.
Stability:	Shelf life: one year from despatch.
Background:	KIR2D family members are cell surface glycoproteins with two Ig domains, which are expressed on natural killer cells and some T cells.



[View online »](#)

Synonyms: CD158a, CD158b, CD158i, KI2DL1, KIR2DL3, KIR2DS4

Product images:



Staining of human peripheral blood lymphocytes with mouse anti-human KIR/KIR2D antibody Cat.-No. SM2036PS.