

Product datasheet for **SM2036P**

CD158 / KIR2D Mouse Monoclonal Antibody [Clone ID: NKVFS1]

Product data:

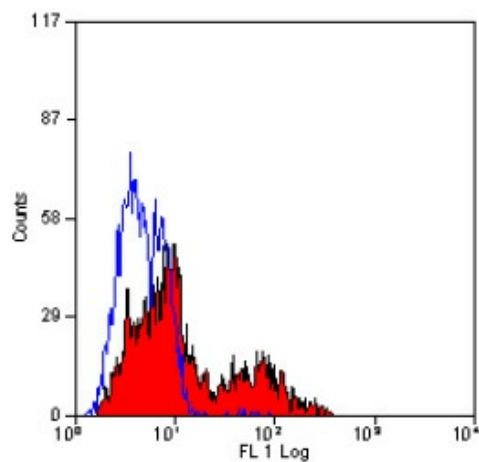
Product Type:	Primary Antibodies
Clone Name:	NKVFS1
Applications:	ELISA, FC, IP, WB
Recommended Dilution:	ELISA. Western Blot. Immunoprecipitation. Flow Cytometry: Use 10 µl of 1/50-1/100 diluted antibody to label 10 ⁶ cells in 100 µl.
Reactivity:	Human
Host:	Mouse
Isotype:	IgG1
Clonality:	Monoclonal
Specificity:	This antibody recognises KIR2D members of the killer cell immunoglobulin (Ig)-like receptor (KIR) family, CD158a, CD158b and P50.3. Clone <i>NKVFS1</i> specifically recognises the long and short forms CD158a and CD158b (KIR2DL, KIR2DS1 and KIR2DS2 respectively) and also p50.3 (KIR2DS4). The Clone is reported to have Functional Activity, activating NK cell cytotoxicity via KIR2DS and inhibiting via KIR2DL forms.
Formulation:	PBS, pH 7.4 State: Aff - Purified State: Liquid purified IgG fraction Preservative: 0.09% Sodium Azide
Concentration:	lot specific
Purification:	Affinity Chromatography on Protein G
Conjugation:	Unconjugated
Storage:	Store undiluted at 2-8°C for one month or (in aliquots) at -20°C for longer. Avoid repeated freezing and thawing.
Stability:	Shelf life: one year from despatch.
Background:	KIR2D family members are cell surface glycoproteins with two Ig domains, which are expressed on natural killer cells and some T cells.



[View online »](#)

Synonyms: CD158a, CD158b, CD158i, KI2DL1, KIR2DL3, KIR2DS4

Product images:



Staining of Human peripheral blood lymphocytes with Mouse Anti Human KIR Antibody (Cat.-No SM2036P).