

Product datasheet for **SM2035PS**

Itga2b Rat Monoclonal Antibody [Clone ID: MWReg30]

Product data:

| | |
|-----------------------|--|
| Product Type: | Primary Antibodies |
| Clone Name: | MWReg30 |
| Applications: | FC, IHC, IP |
| Recommended Dilution: | Flow cytometry (1/50-1/100): Use 10 µl to label 10e6 cells in 100 µl. Immunohistochemistry on Frozen Sections. Immunoprecipitation. |
| Reactivity: | Mouse |
| Host: | Rat |
| Isotype: | IgG1 |
| Clonality: | Monoclonal |
| Specificity: | This antibody recognizes the integrin alpha IIb subunit CD41. Clone MWReg30 has been reported to inhibit PMA induced aggregation in vitro and to induce hypothermia in vivo (Nieswandt et al., 1999). SM2035A is recommended for use in functional studies. |
| Formulation: | PBS, containing 0.09% Sodium Azide as preservative. State: Aff - Purified State: Liquid purified IgG fraction |
| Concentration: | lot specific |
| Purification: | Affinity Chromatography on Protein G. |
| Conjugation: | Unconjugated |
| Storage: | Store undiluted at 2-8°C for one month or (in aliquots) at -20°C for longer. Avoid repeated freezing and thawing. |
| Stability: | Shelf life: one year from despatch. |
| Gene Name: | integrin alpha 2b |
| Database Link: | Entrez Gene 16399 Mouse Q9QUM0 |

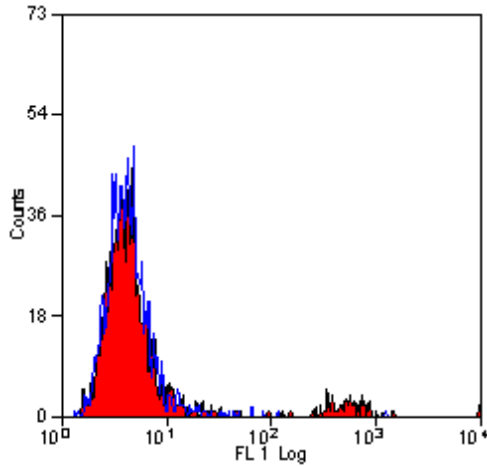


[View online »](#)

Background: CD41, a ~125 kDa single pass type 1 transmembrane glycoprotein, is expressed on platelets, megakaryocytes, mast cells and hematopoietic progenitors and forms a heterodimer with CD61. CD41/CD61 is important for platelet adhesion and aggregation.

Synonyms: Integrin alpha-IIb, GP2B, ITGAB, GPalpha IIb

Product images:



Staining of mouse peripheral blood with rat anti-mouse CD41 Cat.-No. [SM2035P]. Platelets stain strongly for CD41.