

## Product datasheet for **SM2032R**

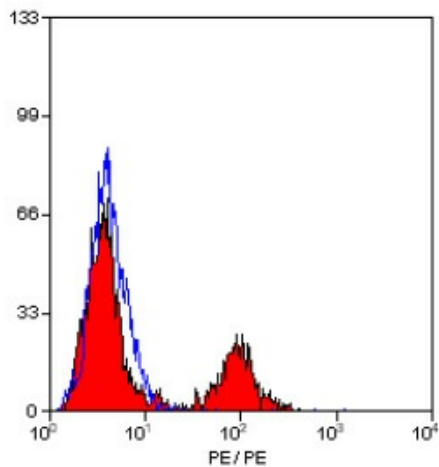
### MHC Class II DQ/DR (polymorphic) Mouse Monoclonal Antibody [Clone ID: 28.1]

#### Product data:

Product Type:	Primary Antibodies
Clone Name:	28.1
Applications:	FC
Recommended Dilution:	Flow Cytometry: Neat - 1/10; Use 10µl of the suggested working dilution to label 10e6 cells in 100µl.
Reactivity:	Sheep
Host:	Mouse
Isotype:	IgG1
Clonality:	Monoclonal
Immunogen:	Ovine alveolar macrophages. Spleen cells from immunised BALB/c mice were fused with cells of the mouse NS1 myeloma cell line.
Specificity:	This antibody recognises a polymorphic epitope on MHC class II DQ and DR molecules. In recent work, this clone was found to recognise ovine MHC II transfectants DQ - T28.1, DQ - T26.2 and DR - T31.3 but not DR - T8.1. (Ballingall, K. et al. 1995).
Formulation:	PBS, pH 7.4 containing 0.09% Sodium Azide and 1% Bovine Serum Albumin Label: PE State: Lyophilized purified IgG Label: R. Phycoerythrin (RPE)
Reconstitution Method:	Restore with 1 ml distilled water
Purification:	Affinity chromatography on Protein G
Conjugation:	PE
Storage:	Prior to and following reconstitution store the antibody at 2-8°C. DO NOT FREEZE! This product is photosensitive and should be protected from light.
Stability:	Shelf life: one year from despatch.
Background:	Ovine MHC class II antigens are expressed on several cell types, including B cells, activated T cells, monocytes, macrophages and dendritic cells.



[View online »](#)

**Product images:**

Staining of sheep peripheral blood lymphocytes with MOUSE ANTI OVINE MHC CLASS II DQ/DR:RPE (SM2032R).