

## Product datasheet for **SM2026R**

### Slamf1 Rat Monoclonal Antibody [Clone ID: 9D1]

#### Product data:

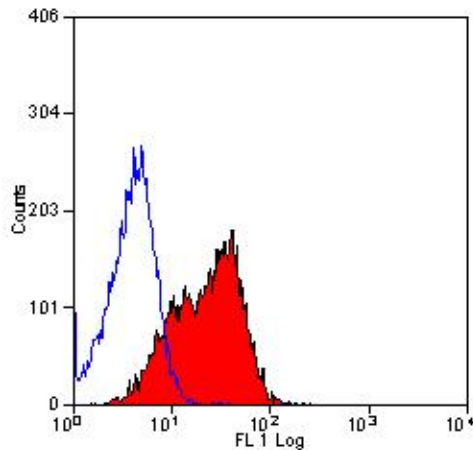
Product Type:	Primary Antibodies
Clone Name:	9D1
Applications:	FC
Recommended Dilution:	Flow cytometry (use 10 µl of neat antibody to label 10e6 cells in 100 µl).
Reactivity:	Mouse
Host:	Rat
Isotype:	IgG1
Clonality:	Monoclonal
Immunogen:	CHO cells stably transfected with mouse CD150
Specificity:	This antibody recognizes murine CD150.
Formulation:	PBS, pH 7.4, with 0.09% Sodium Azide as preservative and 1% BSA as stabilizer Label: PE State: Lyophilized IgG fraction Label: R. Phycoerythrin (RPE)
Reconstitution Method:	Restore with 1 ml distilled water.
Concentration:	lot specific
Purification:	Protein G affinity chromatography
Conjugation:	PE
Storage:	Prior to and following reconstitution store at 2-8°C. DO NOT FREEZE. This product is photosensitive and should be protected from light.
Stability:	Shelf life: one year from despatch.
Gene Name:	signaling lymphocytic activation molecule family member 1
Database Link:	<a href="#">Entrez Gene 27218 Mouse</a> <a href="#">Q9QUM4</a>



[View online »](#)

- Background:** Murine CD150 is a 75kDa cell surface glycoprotein that is expressed on T-cells and B-cells, and has been shown to be upregulated on activated T-cells and stimulated macrophages. Reports suggest that the extracellular domain of CD150 is the receptor for the measles virus and acts as a co-activator on T-cells and B-cells.
- Synonyms:** Slam, CDw150, Ipo-3
- Note:** Clone 9D1 is reported to have functional activity (1). We recommend the use of SM2026A for this purpose.

### Product images:



Staining of mouse thymus with rat anti mouse CD150-RPE