

Product datasheet for **SM2026PS**

Slamf1 Rat Monoclonal Antibody [Clone ID: 9D1]

Product data:

Product Type:	Primary Antibodies
Clone Name:	9D1
Applications:	FC
Recommended Dilution:	Flow Cytometry.
Reactivity:	Mouse
Host:	Rat
Isotype:	IgG1
Clonality:	Monoclonal
Immunogen:	CHO cells stably transfected with mouse CD150. Spleen cells from immunised rats were fused with cells of a myeloma cell line.
Specificity:	This antibody recognises CD150, also known as signalling lymphocyte activation molecule (SLAM). Clone 9D1 is reported to have functional activity. We recommend the use of SM2026A for this purpose. This antibody is routinely tested on mouse thymocytes.
Formulation:	PBS, pH7.4 containing 0.09% Sodium Azide State: Aff - Purified State: Liquid purified IgG
Concentration:	lot specific
Purification:	Affinity chromatography on Protein G
Conjugation:	Unconjugated
Storage:	Store the antibody undiluted at 2-8°C for one month or (in aliquots) at -20°C for longer. Avoid repeated freezing and thawing.
Stability:	Shelf life: one year from despatch.
Gene Name:	signaling lymphocytic activation molecule family member 1
Database Link:	Entrez Gene 27218 Mouse Q9QUM4



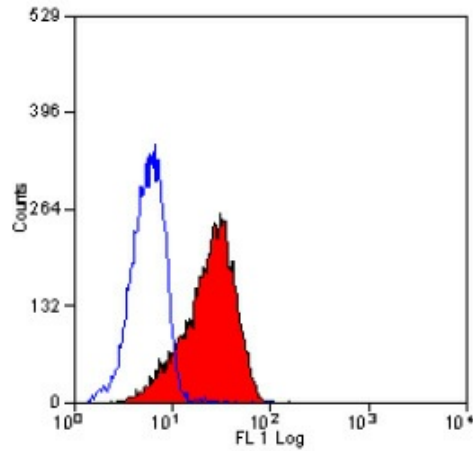
[View online »](#)

Background:

Murine CD150 is a 75kDa cell surface glycoprotein that is expressed on T-cells and B-cells, and has been shown to be upregulated on activated T-cells and stimulated macrophages. Reports suggest that the extracellular domain of CD150 is the receptor for the measles virus and acts as a co-activator on T-cells and Bcells.

Synonyms:

Slam, CDw150, Ipo-3

Product images:

Staining of mouse thymus with RAT ANTI MOUSE CD150.