

Product datasheet for **SM2025LE**

Clec7a Rat Monoclonal Antibody [Clone ID: 2A11]

Product data:

Product Type:	Primary Antibodies
Clone Name:	2A11
Applications:	FC, FN, IHC, IP
Recommended Dilution:	Functional Assays. Immunoprecipitation. Flow Cytometry: Use 1/10-1/50 diluted antibody to label 1 \times 10 ⁶ cells in 100 μ l. Immunohistochemistry on Frozen Sections: The epitope recognised by 2A11 is sensitive to H ₂ O ₂ treatment, therefore quenching with 0.3% H ₂ O ₂ should be performed after incubation with the primary antibody.
Reactivity:	Mouse
Host:	Rat
Isotype:	IgG2b
Clonality:	Monoclonal
Immunogen:	Dectin-1 transfected NIH3T3 cells and recombinant soluble Dectin-1. Spleen cells from immunised Fischer rats were fused with cells of the rat Y3 myeloma cell line.
Specificity:	This antibody clone 2A11 recognises beta-Glucan Receptor, also known as Dectin-1. This antibody inhibits the binding of zymosan to macrophages via the beta-glucan receptor. The low endotoxin version (SM2025LE) is recommended for functional studies.
Formulation:	PBS, pH 7.4 State: Low Endotoxin State: Liquid purified IgG fraction Stabilizer: None Preservative: None
Concentration:	lot specific
Purification:	Affinity Chromatography on Protein G
Conjugation:	Unconjugated
Storage:	Store the antibody undiluted at -20°C. Avoid repeated freezing and thawing.



[View online »](#)

Stability: Shelf life: one year from despatch.

Gene Name: C-type lectin domain family 7, member a

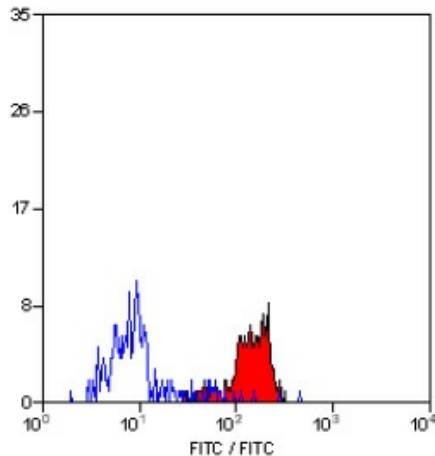
Database Link: [Entrez Gene 56644 Mouse Q6QLQ4](#)

Background: Dectin-1 is predominantly expressed by cells of the monocyte/macrophage and neutrophil lineages, but also at lower levels by dendritic cells and a subpopulation of T cells. As a major leucocyte receptor for beta-glucan this molecule may have a key role in the immunomodulatory effects of beta-glucans and in the host response to fungal pathogens. Recent work has shown that Dectin-1 may stimulate reactive oxygen production in macropahges via the protein tyrosine kinase known as Syk.

Synonyms: Beta-glucan receptor, BGR, CLECSF12, DECTIN1

Note: **Endotoxin Level:** Less than 0.01 EU/ μ g

Product images:



Staining of Mouse peripheral blood monocytes with Rat Anti Mouse Beta Glucan Receptor antibody