

## Product datasheet for **SM2025B**

### Clec7a Rat Monoclonal Antibody [Clone ID: 2A11]

#### Product data:

Product Type:	Primary Antibodies
Clone Name:	2A11
Applications:	FC
Recommended Dilution:	Flow Cytometry: Neat - 1/10; Use 10µl of the suggested working dilution to label 10e6 cells in 100µl.
Reactivity:	Mouse
Host:	Rat
Isotype:	IgG2b
Clonality:	Monoclonal
Immunogen:	Dectin-1 transfected NIH3T3 cells and recombinant soluble Dectin-1. Spleen cells from immunised Fischer rats were fused with cells of the rat Y3 myeloma cell line.
Specificity:	This antibody recognises beta-glucan receptor, also known as Dectin-1. This antibody inhibits the binding of zymosan to macrophages via the beta-glucan receptor. The low endotoxin version (SM2025LE) is recommended for functional studies.
Formulation:	PBS, pH 7.4 containing 0.09% Sodium Azide and 1% Bovine Serum Albumin Label: Biotin State: Liquid purified IgG
Concentration:	lot specific
Purification:	Affinity chromatography on Protein G
Conjugation:	Biotin
Storage:	Store the antibody undiluted at 2-8°C for one month or (in aliquots) at -20°C for longer. Avoid repeated freezing and thawing. This product is photosensitive and should be protected from light.
Stability:	Shelf life: one year from despatch.
Gene Name:	C-type lectin domain family 7, member a
Database Link:	<a href="#">Entrez Gene 56644 Mouse</a> <a href="#">Q6QLQ4</a>



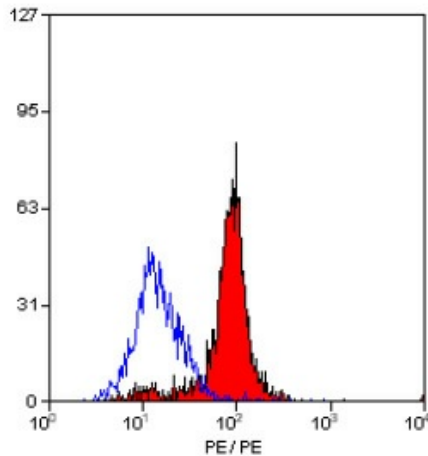
[View online »](#)

**Background:**

Dectin-1 is predominantly expressed by cells of the monocyte/macrophage and neutrophil lineages, but also at lower levels by dendritic cells and a subpopulation of T cells. As a major leucocyte receptor for beta-glucan this molecule may have a key role in the immunomodulatory effects of beta-glucans and in the host response to fungal pathogens. Recent work has shown that Dectin-1 may stimulate reactive oxygen production in macrophages via the protein tyrosine kinase known as Syk.

**Synonyms:**

Beta-glucan receptor, BGR, CLECSF12, DECTIN1

**Product images:**

Staining of mouse peripheral blood granulocytes with RAT ANTI MSE BETA GLUCAN RECEPTOR:BIOTIN.