

## Product datasheet for **SM2023LE**

### CD226 Mouse Monoclonal Antibody [Clone ID: DX11]

#### Product data:

Product Type:	Primary Antibodies
Clone Name:	DX11
Applications:	FC, FN, IP
Recommended Dilution:	Flow Cytometry: 1/50 - 1/200; Use 10µl of the suggested working dilution to label 1 x 10e6 cells in 100µl. Immunoprecipitation. Functional Assays.
Reactivity:	Human
Host:	Mouse
Isotype:	IgG1
Clonality:	Monoclonal
Immunogen:	Human cytotoxic T lymphocyte clone. Spleen cells from immunised BALB/c mouse were fused with cells of the Sp2/0 myeloma cell line.
Specificity:	This antibody recognises CD226. Clone DX11 is reported to inhibit T- and NK cell mediated cytotoxicity against tumour cell targets and to block TNF alpha and IFN gamma secretion by alloantigen-specific T-cells
Formulation:	PBS, pH7.4 State: Low Endotoxin State: Liquid purified IgG
Concentration:	lot specific
Purification:	Affinity chromatography on Protein G
Conjugation:	Unconjugated
Storage:	Store the antibody at -20°C. Avoid repeated freezing and thawing.
Stability:	Shelf life: one year from despatch.
Gene Name:	CD226 molecule
Database Link:	<a href="#">Entrez Gene 10666 Human Q15762</a>



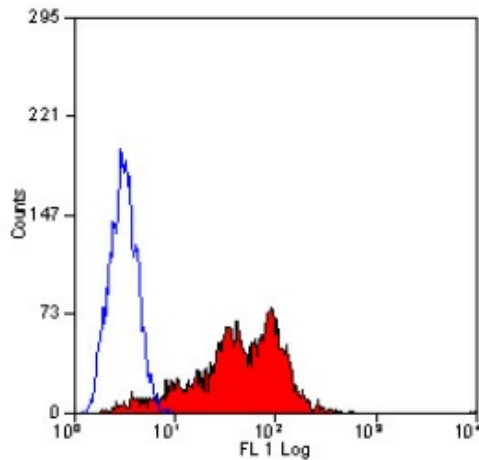
[View online »](#)

**Background:** CD226 is a 65kD glycoprotein, also known as DNAM1 (DNAX accessory molecule-1). CD226 is broadly expressed on T-cells, NK cells, platelets, monocytes and a subset of B cells. CD226 is also expressed by a subset of CD3 positive thymocytes.

**Synonyms:** DNAX accessory molecule 1, DNAM-1

**Note:** Endotoxin Level: less than 0.01 EU/ $\mu$ g

**Product images:**



Staining of human peripheral blood lymphocytes with MOUSE ANTI HUMAN CD226 : LOW ENDOTOXIN.