

Product datasheet for **SM2023F**

CD226 Mouse Monoclonal Antibody [Clone ID: DX11]

Product data:

Product Type:	Primary Antibodies
Clone Name:	DX11
Applications:	FC
Recommended Dilution:	Flow Cytometry: 1/10 - 1/20; Use 10µl of the suggested working dilution to label 1 x 10e6 cells in 100µl.
Reactivity:	Human
Host:	Mouse
Isotype:	IgG1
Clonality:	Monoclonal
Immunogen:	Human cytotoxic T lymphocyte clone. Spleen cells from immunised BALB/c mouse were fused with cells of the Sp2/0 myeloma cell line.
Specificity:	This antibody recognises CD226. Clone DX11 is reported to inhibit T- and NK cell mediated cytotoxicity against tumour cell targets and to block TNF alpha and IFN gamma secretion by alloantigen-specific T-cells. We recommend the use of SM2023A for functional studies.
Formulation:	PBS, pH7.4 containing 0.09% Sodium Azide and 1.0% Bovine Serum Albumin Label: FITC State: Liquid purified IgG Label: Fluorescein Isothiocyanate Isomer 1
Concentration:	lot specific
Purification:	Affinity chromatography on Protein G
Conjugation:	FITC
Storage:	Store the antibody undiluted at 2-8°C for one month or (in aliquots) at -20°C for longer. Avoid repeated freezing and thawing. This product is photosensitive and should be protected from light.
Stability:	Shelf life: one year from despatch.
Gene Name:	CD226 molecule
Database Link:	Entrez Gene 10666 Human Q15762

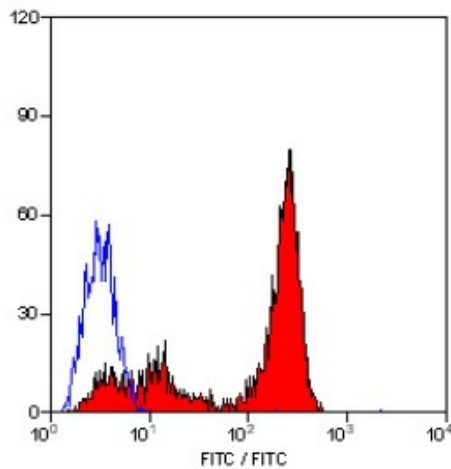


[View online »](#)

Background: CD226 is a 65kD glycoprotein, also known as DNAM1 (DNAX accessory molecule-1). CD226 is broadly expressed on T-cells, NK cells, platelets, monocytes and a subset of B cells. CD226 is also expressed by a subset of CD3 positive thymocytes.

Synonyms: DNAX accessory molecule 1, DNAM-1

Product images:



Staining of human peripheral blood lymphocytes with MOUSE ANTI HUMAN CD226:FITC.