

## Product datasheet for **SM2019P**

### TCP1 eta (CCT7) Rat Monoclonal Antibody [Clone ID: PK/16/81a]

#### Product data:

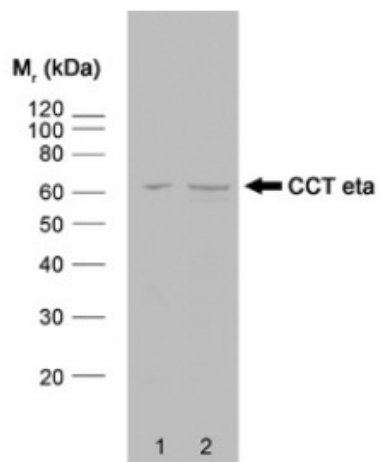
Product Type:	Primary Antibodies
Clone Name:	PK/16/81a
Applications:	IHC, WB
Recommended Dilution:	<b>Western blot:</b> 1/500. Detects a band of approximately 60kD in Hela cell lysates. <b>Immunohistochemistry on Paraffin Sections:</b> 1/100. Requires antigen retrieval using heat treatment prior to staining of paraffin sections. <b>Recommended Positive Control:</b> Human Prostate.
Reactivity:	Bovine, Human, Mouse, Rabbit
Host:	Rat
Isotype:	IgG2a
Clonality:	Monoclonal
Specificity:	This antibody recognises the eta polypeptide of the CCT chaperonin molecule complex.
Formulation:	PBS State: Aff - Purified State: Liquid purified IgG fraction from Tissue Culture Supernatant Preservative: 0.09% Sodium Azide
Concentration:	lot specific
Purification:	Affinity Chromatography on Protein G
Conjugation:	Unconjugated
Storage:	Store undiluted at 2-8°C for one month or (in aliquots) at -20°C for longer. Avoid repeated freezing and thawing.
Stability:	Shelf life: one year from despatch.
Gene Name:	chaperonin containing TCP1 subunit 7
Database Link:	<a href="#">Entrez Gene 10574 Human Q99832</a>
Background:	The intact CCT complex is composed of eight polypeptides in a double-ring structure. CCT is important within cells in aiding the folding of proteins including actin, tubulin and the VHL tumour suppressor protein.



[View online »](#)

Synonyms: CCTH, CCT eta, NIP7-1

### Product images:



Western blot analysis of HeLa whole cell lysate (lane 1) and HeLa heat stressed whole cell lysate (lane 2) probed with rat anti CCT Eta Cat.-No. SM2019P followed by F(ab')<sub>2</sub> rabbit anti rat IgG:HRP (Cat.No. [SP1021HRP]).