

Product datasheet for **SM2017P**

TCP1 theta (CCT8) Rat Monoclonal Antibody [Clone ID: PK/13/72/8k]

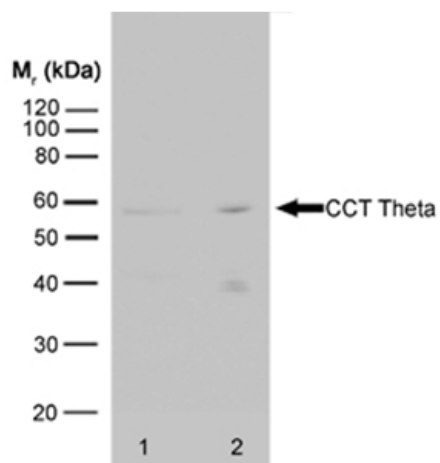
Product data:

| | |
|-----------------------|--|
| Product Type: | Primary Antibodies |
| Clone Name: | PK/13/72/8k |
| Applications: | IP, WB |
| Recommended Dilution: | Immunoprecipitation. Western Blot: 1/250-1/500. This antibody detects a band of approximately 60kD in lysates of heat shocked Hela cells. |
| Reactivity: | Bovine, Human, Mouse, Rabbit |
| Host: | Rat |
| Isotype: | IgG2a |
| Clonality: | Monoclonal |
| Specificity: | This antibody recognises the theta polypeptide of the CCT chaperonin molecule complex. |
| Formulation: | PBS containing 0.09% Sodium Azide as preservative State: Aff - Purified State: Liquid purified IgG fraction |
| Concentration: | lot specific |
| Purification: | Affinity Chromatography on Protein G |
| Conjugation: | Unconjugated |
| Storage: | Store the antibody undiluted at 2-8°C for one month or (in aliquots) at -20°C for longer. Avoid repeated freezing and thawing. |
| Stability: | Shelf life: one year from despatch. |
| Gene Name: | chaperonin containing TCP1 subunit 8 |
| Database Link: | Entrez Gene 10694 Human P50990 |
| Background: | The intact CCT complex is composed of eight polypeptides in a double-ring structure. CCT is important within cells in aiding the folding of proteins including actin, tubulin and the VHL tumour suppressor protein. |
| Synonyms: | CCTQ, CCT theta, KIAA0002, NY-REN-15 |



[View online »](#)

Product images:



Western blot analysis of HeLa whole cell lysate (Lane 1) and HeLa heat stressed whole cell lysate (Lane 2) probed with Rat anti CCT theta Cat.-No SM2017P followed by F (ab')₂ Rabbit anti Rat IgG:HRP (Cat.-No [SP1021HRP]).