

## Product datasheet for **SM2016P**

### TCP1 beta (CCT2) Rat Monoclonal Antibody [Clone ID: PK/8/4/4i/2f]

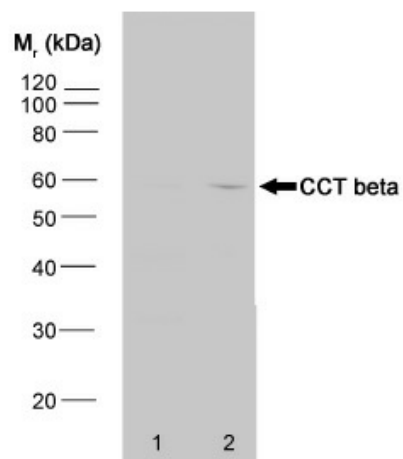
#### Product data:

Product Type:	Primary Antibodies
Clone Name:	PK/8/4/4i/2f
Applications:	WB
Recommended Dilution:	Western blot: 1/100-1/500. Detects a band of approximately 60kD in lysates of heat shocked HeLa cells.
Reactivity:	Bovine, Canine, Chicken, Hamster, Human, Monkey, Mouse, Porcine, Rabbit, Rat, Sheep
Host:	Rat
Isotype:	IgG2b
Clonality:	Monoclonal
Specificity:	This antibody recognizes the beta polypeptide of the CCT chaperonin molecule complex.
Formulation:	PBS containing 0.09% Sodium Azide as preservative State: Aff - Purified State: Liquid purified IgG fraction
Concentration:	lot specific
Purification:	Affinity Chromatography on Protein G
Conjugation:	Unconjugated
Storage:	Store the antibody undiluted at 2-8°C for one month or (in aliquots) at -20°C for longer. Avoid repeated freezing and thawing.
Stability:	Shelf life: one year from despatch.
Gene Name:	chaperonin containing TCP1 subunit 2
Database Link:	<a href="#">Entrez Gene 10576 Human P78371</a>
Background:	The intact CCT complex is composed of eight polypeptides in a double-ring structure. CCT is important within cells in aiding the folding of proteins including actin, tubulin and the VHL tumour suppressor protein.
Synonyms:	99D8.1, CCT-beta, CCTB, TCP-1 beta



[View online »](#)

## Product images:



Western blot analysis of HeLa whole cell lysate (Lane 1) and HeLa heat stressed whole cell lysate (Lane 2) probed with Rat Anti Human CCT Beta antibody (SM2016P) followed by F (ab')<sub>2</sub> Rabbit Anti Rat IgG:HRP ([SP1021HRP]).