

## Product datasheet for **SM2011F**

### MRP8 / MRP14 Mouse Monoclonal Antibody [Clone ID: MAC387]

#### Product data:

Product Type:	Primary Antibodies
Clone Name:	MAC387
Applications:	FC
Recommended Dilution:	<b>Flow Cytometry:</b> Use 10 µl of neat antibody to label 10e6 cells in 100 µl. (Membrane permeabilization is required).
Reactivity:	Bovine, Canine, Equine, Feline, Guinea Pig, Human, Monkey, Porcine, Rabbit, Rat
Host:	Mouse
Isotype:	IgG1
Clonality:	Monoclonal
Immunogen:	Human Monocytes. Spleen cells from immunised BALB/c mice were fused with cells of the mouse NS1 myeloma cell line.
Specificity:	This antibody recognises the L1 or Calprotectin molecule, an intracytoplasmic antigen comprised of a 12kD alpha chain and a 14kD beta chain. The antigen recognized by this anti Macrophages antibody is expressed by granulocytes, monocytes and by tissue macrophages. Variable results have been reported for staining brain macrophages and microglia.
Formulation:	PBS containing 0.09% Sodium Azide as preservative and 1% BSA as stabilizer. Label: FITC State: Liquid purified IgG fraction Label: Fluorescein Isothiocyanate Isomer 1
Concentration:	lot specific
Purification:	Affinity Chromatography on Protein G
Conjugation:	FITC
Storage:	Store undiluted at 2-8°C for one month or (in aliquots) at -20°C for longer. This product is photosensitive and should be protected from light. Avoid repeated freezing and thawing.
Stability:	Shelf life: one year from despatch.



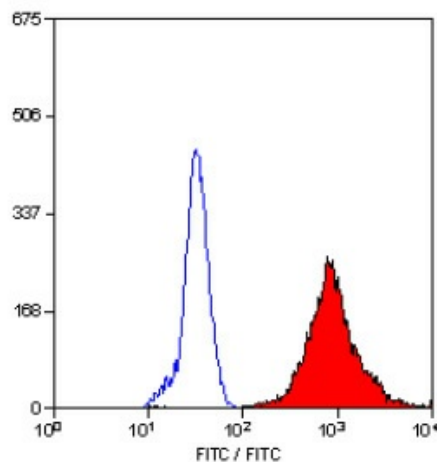
[View online »](#)

**Background:**

Macrophages comprise of many forms of mononuclear phagocytes found in tissues. Mononuclear phagocytes arise from hematopoietic stem cells in the bone marrow. After passing through the monoblast and promonocyte states of the monocyte stage, they enter the blood, where they circulate for about 40 hours. They then enter tissues and increase in size, phagocytic activity, and lysosomal enzyme content becoming macrophages. Among the functions of macrophages are nonspecific phagocytosis and pinocytosis, specific phagocytosis of opsonized microorganisms mediated by Fc receptors and complement receptors, killing of ingested microorganisms, digestion and presentation of antigens to T and B lymphocytes, and secretion of a large number of diverse products, including many enzymes including lysozyme and collagenases, several complement components and coagulation factors, some prostaglandins and leukotrienes, and many regulatory molecules (Interferon, Interleukin 1). Among cells that are now recognised as macrophages are histiocytes, Kupffer cells, osteoclasts, microglial cells, synovial type A cells, interdigitating cells, and Langerhans cells (in normal tissues) and epithelioid cells and Langerhans-type and foreign-body-type multinucleated giant cells (in inflamed tissues).

**Synonyms:**

S100A8/A9, S100A8, S100A9, MRP8/14

**Product images:**


SM2011F Human Macrophages antibody -FITC  
Staining of Human peripheral blood granulocytes.