

Product datasheet for **SM2004AC**

IGF2R Mouse Monoclonal Antibody [Clone ID: MEM-238]

Product data:

Product Type:	Primary Antibodies
Clone Name:	MEM-238
Applications:	FC, WB
Recommended Dilution:	Flow Cytometry analysis of human blood cells using 10 µl reagent / 100 µl of whole blood or 10e6 cells in a suspension. The content of a vial (1 ml) is sufficient for 100 tests.
Reactivity:	Human, Primate
Host:	Mouse
Isotype:	IgG1
Clonality:	Monoclonal
Immunogen:	Recombinant Vaccinia virus encoding CD222
Specificity:	This antibody recognizes an epitope between domains 2 and 5 of CD222 (IGF2 receptor), a ubiquitously expressed 250 kDa multifunctional type I transmembrane protein. The majority of CD222 is found in the late endosomal/prelysosomal compartment, 5-10% in the plasma membrane and the truncated (220 kDa) form of CD222 is present in human and bovine serum.
Formulation:	Conjugated with cross-linked Allophycocyanin (APC) under optimum conditions Label: APC State: Liquid purified Ig fraction Label: Conjugated with cross-linked Allophycocyanin under optimum conditions. The conjugate is purified by size-exclusion chromatography and adjusted for direct use.
Conjugation:	APC
Storage:	Store the antibody at 2 - 8 °C. DO NOT FREEZE! This product is photosensitive and should be protected from light.
Stability:	Shelf life: one year from despatch.
Gene Name:	insulin like growth factor 2 receptor
Database Link:	Entrez Gene 3482 Human P11717



[View online »](#)

- Background:** CD222 (CIMPR, cation-independent mannose 6-phosphate receptor; IGF2 receptor) is a ubiquitously expressed 250 kDa transmembrane protein. No more than 10% of CD222 is present on the cell surface where it serves as a multifunctional receptor. Intracellular (major) fraction of CD222 is involved in transport of newly synthesized lysosomal enzymes modified by mannose 6-phosphate from Golgi apparatus to lysosomes. The cell surface CD222 binds and internalizes exogeneous mannose 6-phosphate-containing ligands. Importantly, CD222 is crucial for internalization and degradation of insulin-like growth factor 2, thus controlling cell growth. CD222 also complexes CD87 (urokinase-type plasminogen-activator receptor), plasminogen and latent TGF-beta, last but not least CD222 serves as a receptor for heparanase and even for Listeria.
- Synonyms:** CI-MPR, Insulin-like growth factor 2 receptor, Insulin-like growth factor II receptor, M6P/IGF2 receptor, CI Man-6-P receptor, M6PR, Late Endosome Marker, M6P/IGF2R, MPR 300
- Protein Families:** Druggable Genome, Transmembrane
- Protein Pathways:** Lysosome
- Product images:**

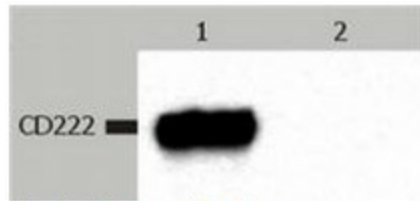


Fig. 1. Western Blotting

Western Blotting analysis (non-reducing conditions) of CD222 in whole cell lysate of JURKAT human peripheral blood T cell leukemia cell line. Lane 1: immunostaining with anti-CD222 (MEM-238) Lane 2: immunostaining with Isotype mouse IgG1 control (PPV-06)