

Product datasheet for **SM2003R**

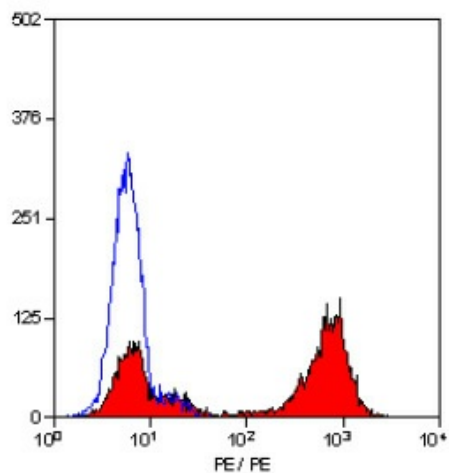
CD177 Mouse Monoclonal Antibody [Clone ID: MEM-166]

Product data:

Product Type:	Primary Antibodies
Clone Name:	MEM-166
Applications:	FC
Recommended Dilution:	Flow cytometry.
Reactivity:	Human, Monkey, Rhesus Monkey
Host:	Mouse
Isotype:	IgG1
Clonality:	Monoclonal
Specificity:	This antibody recognises CD177 (neutrophil glycoprotein NB1).
Formulation:	PBS containing 0.09% Sodium Azide and 1.0% Bovine Serum Albumin Label: PE State: Lyophilized purified IgG Label: R. Phycoerythrin (RPE)
Reconstitution Method:	Restore with 1 ml distilled water.
Concentration:	lot specific
Purification:	Affinity chromatography on Protein G
Conjugation:	PE
Storage:	Store the antibody undiluted at 2-8°C. DO NOT FREEZE! This product is photosensitive and should be protected from light.
Stability:	Shelf life: one year from despatch.
Gene Name:	CD177 molecule
Database Link:	Entrez Gene 57126 Human Q8N6Q3
Background:	The neutrophil NB1 antigen is expressed by 97% of the caucasian population. Antibodies against NB1 can be involved in neonatal alloimmune neutropenia (NAN).
Synonyms:	NB1, PRV1, HNA-2a, HNA2a



[View online »](#)

Product images:

Staining of human peripheral blood granulocytes with MOUSE ANTI HUMAN CD177:RPE (SM2003R).