

Product datasheet for **SM1927R**

CD101 Mouse Monoclonal Antibody [Clone ID: BB27]

Product data:

Product Type:	Primary Antibodies
Clone Name:	BB27
Applications:	FC, IHC, IP
Recommended Dilution:	Flow Cytometry: (Neat- 1/5) Use 10 µl of the suggested working dilution to label 10e6 cell in 100 µl.
Reactivity:	Human
Host:	Mouse
Isotype:	IgG1
Clonality:	Monoclonal
Immunogen:	Human thymic clone B12.
Specificity:	This antibody recognises CD101. Clone BB27 has been reported to inhibit allogeneic T-cell responses.
Formulation:	PBS, pH7.4 containing 0.09% Sodium Azide as preservative and 1% Bovine Serum Albumin as stabilizer. Label: PE State: Lyophilized purified IgG fraction. Label: R. Phycoerythrin (RPE)
Reconstitution Method:	Restore with 0.25 ml distilled water.
Purification:	Affinity Chromatography on Protein G.
Conjugation:	PE
Storage:	Prior to and following reconstitution store the antibody undiluted at 2-8°C. DO NOT FREEZE! This product is photosensitive and should be protected from light.
Stability:	Shelf life: One year from despatch.
Gene Name:	CD101 molecule
Database Link:	Entrez Gene 9398 Human Q93033



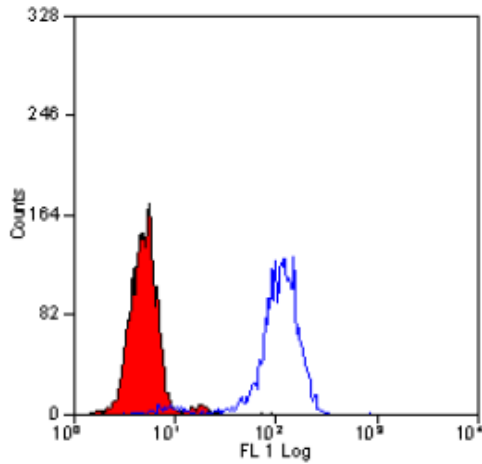
[View online »](#)

Background:

CD101 is a 140kD homodimeric cell surface glycoprotein expressed primarily by monocytes, granulocytes, dendritic cells and activated T lymphocytes. Studies suggest that CD101 plays a major role in the activation of T cells by skin dendritic cells.

Synonyms:

IGSF2, EWI101, EWI-101, V7

Product images:

Staining of human peripheral blood granulocytes with MOUSE ANTI HUMAN CD101: RPE (SM1927R / [SM1927RT]).