

Product datasheet for **SM1858RT**

CD1 (CD1A) Mouse Monoclonal Antibody [Clone ID: NA1/34-HLK]

Product data:

Product Type:	Primary Antibodies
Clone Name:	NA1/34-HLK
Applications:	FC
Recommended Dilution:	Flow cytometry. Use 10 ul of the suggested working dilution to label 10 ⁶ cells in 100 ul.
Reactivity:	Canine, Human, Monkey
Host:	Mouse
Isotype:	IgG2a
Clonality:	Monoclonal
Immunogen:	Human thymocytes. Spleen cells from immunised BALB/c mice were fused with cells of the NS1/1 Ag4.1 mouse myeloma cell line.
Specificity:	This antibody recognises the CD1a cell surface glycoprotein. This product is routinely tested in flow cytometry on MOLT4 cells.
Formulation:	PBS, pH7.2 containing 0.09% Sodium Azide and 1.0% Bovine Serum Albumin, 5% Sucrose. Label: PE State: Lyophilized purified IgG Label: R. Phycoerythrin (RPE)
Reconstitution Method:	Restore with 0.25 ml distilled water.
Purification:	Ion exchange chromatography
Conjugation:	PE
Storage:	Prior to and following reconstitution store the antibody at 2-8°C. DO NOT FREEZE! This product is photosensitive and should be protected from light.
Stability:	Shelf life: one year from despatch.
Gene Name:	CD1a molecule
Database Link:	Entrez Gene 909 Human P06126

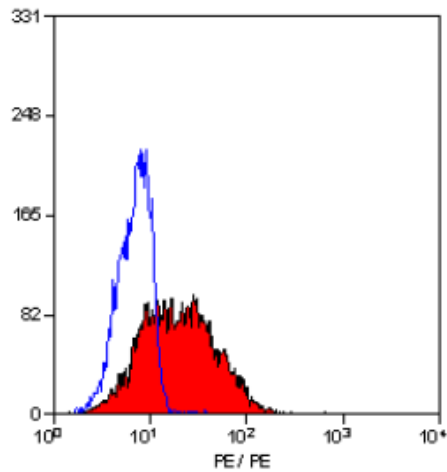


[View online »](#)

Background: CD1a is a 49kD molecule expressed in association with beta 2 microglobulin. CD1a is expressed strongly by cortical thymocytes, and also by Langerhans cells and interdigitating cells.

Synonyms: T6/Leu-6, hTa1

Product images:



Staining of MOLT 4 cells with MOUSE ANTI HUMAN CD1a:RPE ([SM1858R]).