

## Product datasheet for **SM1858P**

### CD1 (CD1A) Mouse Monoclonal Antibody [Clone ID: NA1/34-HLK]

#### Product data:

Product Type:	Primary Antibodies
Clone Name:	NA1/34-HLK
Applications:	FC, IHC
Recommended Dilution:	<b>Flow Cytometry:</b> Use 10 µl of 1/50-1/100 diluted antibody to label 10e6 cells in 100 µl. This antibody is routinely tested in Flow Cytometry on MOLT4 cells. <b>Immunohistochemistry on Frozen Sections.</b> <i>Recommended Positive Control Tissue:</i> Skin.
Reactivity:	Canine, Human, Monkey
Host:	Mouse
Isotype:	IgG2a
Clonality:	Monoclonal
Immunogen:	Human thymocytes. Spleen cells from BALB/c mice were fused with cells of the NS1/Ag4.1 myeloma cell line.
Specificity:	This antibody recognises the CD1a cell surface glycoprotein.
Formulation:	PBS, pH 7.4 containing 0.09% Sodium Azide as preservative. State: Purified State: Liquid purified IgG fraction.
Concentration:	lot specific
Purification:	Ion Exchange Chromatography.
Conjugation:	Unconjugated
Storage:	Store the antibody undiluted at 2-8°C for one month or (in aliquots) at -20°C for longer. Avoid repeated freezing and thawing.
Stability:	Shelf life: one year from despatch.
Gene Name:	CD1a molecule
Database Link:	<a href="#">Entrez Gene 909 Human P06126</a>



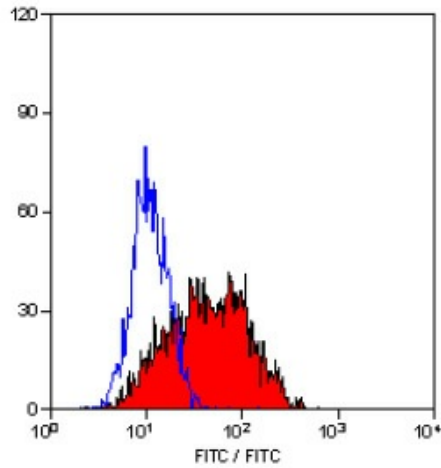
[View online »](#)

**Background:**

CD1a is a 49kD molecule expressed in association with beta 2 microglobulin. CD1a is expressed strongly by cortical thymocytes, and also by Langerhans cells and interdigitating cells.

**Synonyms:**

T6/Leu-6, hTa1

**Product images:**

Staining of MOLT 4 cells with MOUSE ANTI HUMAN CD1a.