

Product datasheet for **SM1846R**

CD229 (LY9) Mouse Monoclonal Antibody [Clone ID: HLy 9.1.25]

Product data:

Product Type:	Primary Antibodies
Clone Name:	HLy 9.1.25
Applications:	FC
Recommended Dilution:	Flow Cytometry: Use 10 µl of neat antibody to label 10e6 cells in 100 µl or 100 µl whole blood.
Reactivity:	Human
Host:	Mouse
Isotype:	IgG1
Clonality:	Monoclonal
Immunogen:	Mouse pre-B cell line 300.19 transfected with CD229 cDNA.
Specificity:	This antibody recognises the CD229 cell surface antigen, a 100-120kD cell surface glycoprotein that is the homologue of Murine Ly-9.
Formulation:	PBS containing 0.09% Sodium Azide as preservative and 1% BSA, 5% Sucrose as stabilizers Label: PE State: Lyophilized purified IgG fraction Label: R. Phycoerythrin (RPE)
Reconstitution Method:	Restore with 1 ml distilled water
Purification:	Affinity Chromatography on Protein G
Conjugation:	PE
Storage:	Prior to and following reconstitution store the antibody at 2-8°C. DO NOT FREEZE! This product is photosensitive and should be protected from light.
Stability:	Shelf life: one year from despatch.
Gene Name:	lymphocyte antigen 9
Database Link:	Entrez Gene 4063 Human Q9HBG7



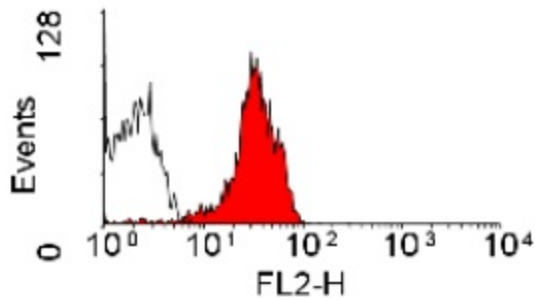
[View online »](#)

Background:

CD229 is a member of the immunoglobulin superfamily and may have a function in cell signalling. The antigen is expressed at low levels by mature T and B lymphocytes and at higher levels by single-positive thymocytes. Expression at variable levels is also seen in some cell lines, such as Daudi, U937 and HUT78.

Synonyms:

Ly-9

Product images:

Staining of Human peripheral blood lymphocytes with Mouse anti Human CD229 antibody RPE conjugated (SM1846R).