

## Product datasheet for **SM1834RT**

### CD11c (ITGAX) Mouse Monoclonal Antibody [Clone ID: BU15]

#### Product data:

Product Type:	Primary Antibodies
Clone Name:	BU15
Applications:	FC
Recommended Dilution:	<b>Flow Cytometry:</b> Neat - 1/10; Use 10µl of the suggested working dilution to label 10e6 cells in 100µl.
Reactivity:	Canine, Human, Monkey
Host:	Mouse
Isotype:	IgG1
Clonality:	Monoclonal
Specificity:	This antibody recognises the integrin alphax subunit.
Formulation:	PBS Label: PE State: Lyophilized purified IgG fraction Stabilizer: 1% BSA, 5% Sucrose Preservative: 0.09% Sodium Azide Label: R. Phycoerythrin (RPE) Absorption emission: 496 nm / 578 nm (PE 488 nm laser). 546 nm / 578 nm (PE 561 nm laser).
Reconstitution Method:	Restore with 1 ml distilled water
Concentration:	lot specific
Conjugation:	PE
Storage:	Prior to and following reconstitution store the antibody at 2-8°C. <b>DO NOT FREEZE!</b> This product is photosensitive and should be protected from light.
Stability:	Shelf life: one year from despatch.
Gene Name:	integrin subunit alpha X
Database Link:	<a href="#">Entrez Gene 3687 Human P20702</a>



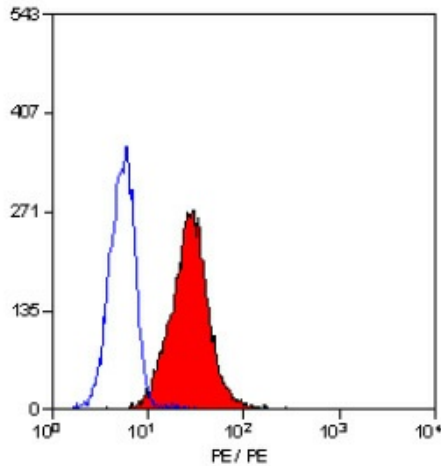
[View online »](#)

**Background:**

CD11c is a 150kD glycoprotein expressed by macrophages, monocytes, granulocytes and NK cells. The antigen is also expressed by hairy cell leukaemia cells. Ligands for CD11c are ICAM-1, iC3b, and fibrinogen. The molecule has a role in mediating adherence of granulocytes and monocytes to endothelium and fibrinogen.

**Synonyms:**

ITGAX, Integrin alpha-X, Leu M5

**Product images:**

Staining of human peripheral blood granulocytes with MOUSE ANTI HUMAN CD11c:RPE (SM1834R).