

Product datasheet for **SM1834P**

CD11c (ITGAX) Mouse Monoclonal Antibody [Clone ID: BU15]

Product data:

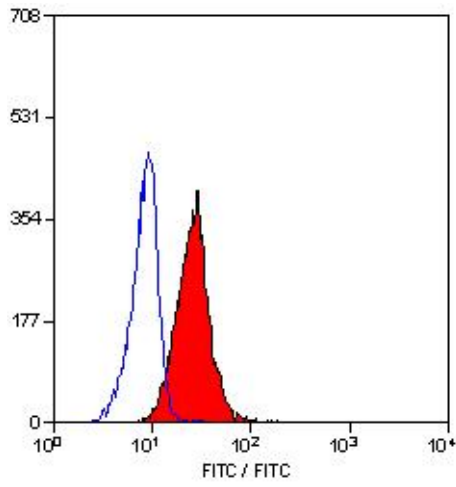
| | |
|-----------------------|---|
| Product Type: | Primary Antibodies |
| Clone Name: | BU15 |
| Applications: | FC, IHC |
| Recommended Dilution: | Flow Cytometry: Use 10 µl of 1/10-1/50 of diluted antibody to label 10e6 cells in 100 µl. Immunoprecipitation. Immunohistochemistry on Frozen Sections: Antibody is reported to be sensitive to formaldehyde fixation and tissue processing. Use acetone as fixative. Not suitable for Paraffin Embedded Sections. |
| Reactivity: | Human, Monkey |
| Host: | Mouse |
| Isotype: | IgG1 |
| Clonality: | Monoclonal |
| Specificity: | This antibody recognises the Integrin alpha X subunit. |
| Formulation: | PBS buffer containing 0.09% Sodium Azide as preservative. State: Purified State: Liquid purified Ig fraction. |
| Concentration: | lot specific |
| Conjugation: | Unconjugated |
| Storage: | Store undiluted at 2-8°C for one month or (in aliquots) at -20°C for longer. Avoid repeated freezing and thawing. |
| Stability: | Shelf life: one year from despatch. |
| Gene Name: | integrin subunit alpha X |
| Database Link: | Entrez Gene 3687 Human P20702 |
| Background: | CD11c is a 150kD glycoprotein expressed by macrophages, monocytes, granulocytes and NK cells. The antigen is also expressed by hairy cell leukaemia cells. Ligands for CD11c are ICAM-1, iC3b, and fibrinogen. The molecule has a role in mediating adherence of granulocytes and monocytes to endothelium and fibrinogen. |



[View online »](#)

Synonyms: ITGAX, Integrin alpha-X, Leu M5

Product images:



Staining of human peripheral blood granulocytes with Mouse anti Human CD11c ([SM1834PS]).