

Product datasheet for **SM1822PS**

Cytokeratin 19 (KRT19) Mouse Monoclonal Antibody [Clone ID: BA-17]

Product data:

Product Type:	Primary Antibodies
Clone Name:	BA-17
Applications:	FC, IF, IHC, IP, WB
Recommended Dilution:	Western blotting. Flow Cytometry. Immunoprecipitation. Immunocytochemistry. Immunohistochemistry on Frozen Sections. Immunohistochemistry on Paraffin Sections: 1/50-1/100. this product requires protein digestion pre-treatment of paraffin sections e.g. trypsin or pronase. <i>Recommended Positive Control Tissue:</i> Normal breast.
Reactivity:	Human
Host:	Mouse
Isotype:	IgG1
Clonality:	Monoclonal
Immunogen:	Mammary organoids
Specificity:	The antibody reacts with Cytokeratin 19 (40 kDa) in Human Tissue. Cytokeratin 19 is not expressed in hepatocytes; it is often co-expressed with Cytokeratin 7.
Formulation:	Phosphate buffered saline (PBS), pH~7.4 State: Purified State: Liquid purified Ig fraction (> 95% pure by SDS-PAGE). Preservative: 15 mM Sodium Azide
Concentration:	lot specific
Purification:	Protein A Affinity Chromatography.
Conjugation:	Unconjugated
Storage:	Store the antibody undiluted at 2-8°C for one month or (in aliquots) at -20°C for longer. Avoid repeated freezing and thawing.
Stability:	Shelf life: one year from despatch.



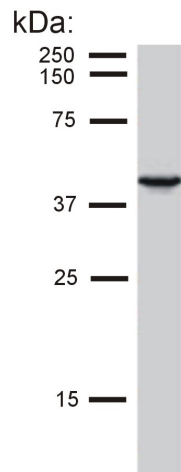
[View online »](#)

Gene Name: keratin 19
Database Link: [Entrez Gene 3880 Human P08727](#)

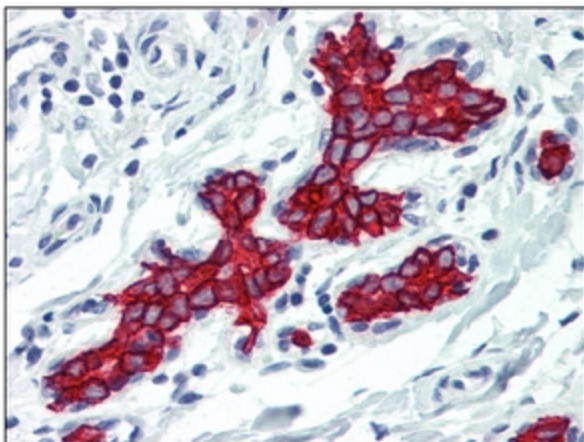
Background: Cytokeratins are a subfamily of intermediate filaments and characterized by remarkable biochemical diversity. Cytokeratins are represented in epithelial tissues by at least 20 different polypeptides, molecular weight between 40 kDa and 68 kDa. The individual cytokeratin polypeptides are designated 1 to 20 and divided into the type I (acidic cytokeratins 9-20) and type II (basic to neutral cytokeratins 1-8) families.

Synonyms: Cytokeratin-19, Keratin-19, KRT19, CK19, K19

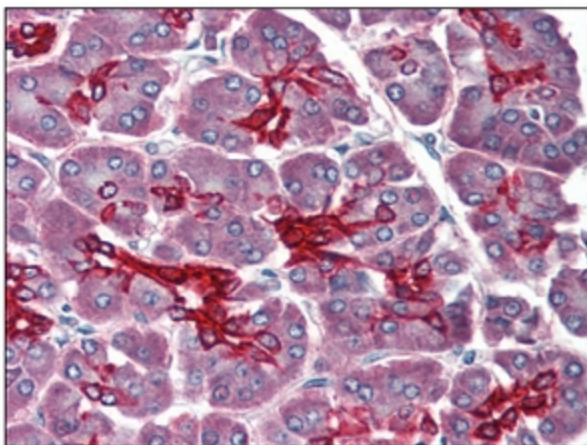
Product images:



Detection of cytokeratin 19 in MCF-7 cell lysate by mouse monoclonal antibody BA-17.



Immunohistochemistry: KRT19 antibody staining of Formalin-Fixed, paraffin-Embedded Human Breast at 10 ug/ml followed by biotinylated anti-mouse IgG secondary antibody, alkaline phosphatase-streptavidin and chromogen.



Immunohistochemistry: KRT19 antibody staining of Formalin-Fixed, paraffin-Eembedded Human Pancreas at 10 ug/ml followed by biotinylated anti-mouse IgG secondary antibody, alkaline phosphatase-streptavidin and chromogen.