

Product datasheet for **SM1819R**

CD46 Mouse Monoclonal Antibody [Clone ID: MEM-258]

Product data:

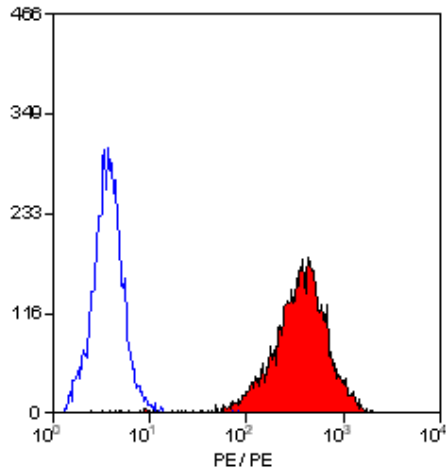
Product Type:	Primary Antibodies
Clone Name:	MEM-258
Applications:	FC
Recommended Dilution:	Flow cytometry: use 10 µl of neat antibody to label 10e6 cells.
Reactivity:	Human
Host:	Mouse
Isotype:	IgG1
Clonality:	Monoclonal
Immunogen:	HPB-ALL cell line
Specificity:	This antibody recognises the human CD46 cell surface antigen, a broadly expressed glycoprotein also known as membrane co-factor protein (MCP).
Formulation:	PBS with 0.09% sodium azide as preservative and 1% BSA as stabilizer Label: PE State: Lyophilized purified immunoglobulin fraction Label: R. Phycoerythrin
Reconstitution Method:	Restore with 1 ml distilled water.
Purification:	Protein A affinity chromatography
Conjugation:	PE
Storage:	Store at 2-8°C. This product should be stored undiluted. DO NOT FREEZE. This product is photosensitive and should be protected from light.
Stability:	Shelf life: one year from despatch.
Gene Name:	CD46 molecule
Database Link:	Entrez Gene 4179 Human P15529
Background:	CD46 functions as an inhibitor of complement activation limiting the formation and activity of C3 convertases. CD46 is expressed by all nucleated cells, often as multiple isoforms on the same cells. The molecule is also expressed by sperm and may be important in the process of fertilisation.



[View online »](#)

Synonyms: TLX, MIC10

Product images:



Staining of human peripheral blood lymphocytes with MOUSE ANTI HUMAN CD46:RPE (SM1819R).