

## Product datasheet for **SM1819PS**

### CD46 Mouse Monoclonal Antibody [Clone ID: MEM-258]

#### Product data:

Product Type:	Primary Antibodies
Clone Name:	MEM-258
Applications:	FC, IP, WB
Recommended Dilution:	<b>Western Blot</b> ( <i>Non-Reducing Conditions</i> ). <b>Immunoprecipitation.</b> <b>Flow Cytometry:</b> 1 µg/ml.
Reactivity:	Bovine, Human
Host:	Mouse
Isotype:	IgG1
Clonality:	Monoclonal
Immunogen:	HPB-ALL human T cell line
Specificity:	The antibody <i>MEM-258</i> recognizes an epitope on SCR4 (the membrane-proximal SCR) domain of CD46 (Membrane cofactor protein). CD46 is 56-66 kDa dimeric transmembrane protein expressed on T and B lymphocytes, platelets, monocytes, granulocytes, endothelial cells, epithelial cells and fibroblast; it is negative on erythrocytes.
Formulation:	Phosphate buffered saline (PBS) with 15 mM sodium azide, approx. pH 7.4 State: Purified State: Liquid purified Ig fraction (> 95% pure by SDS-PAGE)
Concentration:	lot specific
Purification:	Affinity Chromatography on Protein A
Conjugation:	Unconjugated
Storage:	Store undiluted at 2-8°C. <b>DO NOT FREEZE!</b>
Stability:	Shelf life: one year from despatch.
Gene Name:	CD46 molecule
Database Link:	<a href="#">Entrez Gene 4179 Human P15529</a>



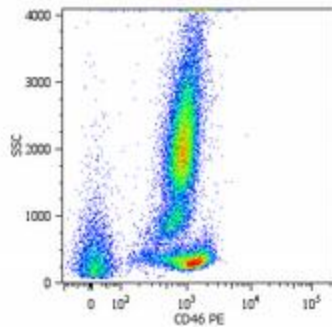
[View online »](#)

**Background:**

CD46 (MCP, membrane cofactor protein) is a multifunctional cell surface transmembrane protein that binds and inactivates C3b and C4b complement fragments, regulates T cell-induced inflammatory responses by either inhibiting (CD46-1 isoform) or increasing (CD46-2 isoform) the contact hypersensitivity reaction. CD46 also serves as a receptor for several human pathogens (both bacteria and viruses), and its ligation alters T lymphocyte polarization toward antigen-presenting cells or target cells, inhibiting lymphocyte function. CD46 is a protector of placental tissue and is also expressed on the inner acrosomal membrane of spermatozoa.

**Synonyms:**

TLX, MIC10

**Product images:**

Surface staining of Human peripheral blood cells with anti-CD46 Antibody (MEM-258) PE.