

Product datasheet for **SM1819P**

CD46 Mouse Monoclonal Antibody [Clone ID: MEM-258]

Product data:

Product Type:	Primary Antibodies
Clone Name:	MEM-258
Applications:	FC, IP, WB
Recommended Dilution:	Flow cytometry: 1/10 - 1/50; use 10 µl of the suggested working dilution to label 10e6 cells. Immunoprecipitation. Western Blot.
Reactivity:	Human
Host:	Mouse
Isotype:	IgG1
Clonality:	Monoclonal
Immunogen:	HPB-ALL cell line
Specificity:	This antibody recognises the CD46 cell surface antigen, a broadly expressed glycoprotein also known as membrane co-factor protein (MCP).
Formulation:	PBS containing 0.09% Sodium Azide State: Purified State: Liquid purified IgG fraction
Concentration:	lot specific
Purification:	Affinity chromatography on Protein A
Conjugation:	Unconjugated
Storage:	Store the antibody undiluted at 2-8°C for one month or (in aliquots) at -20°C for longer. Avoid repeated freezing and thawing.
Stability:	Shelf life: one year from despatch.
Gene Name:	CD46 molecule
Database Link:	Entrez Gene 4179 Human P15529

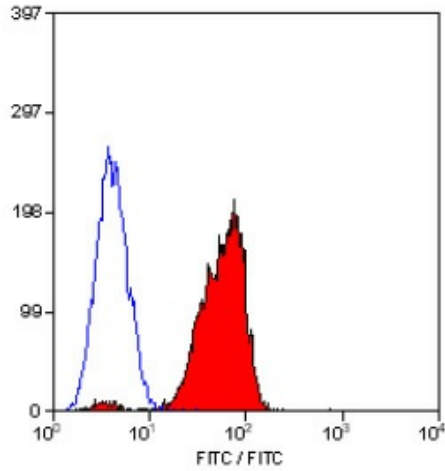


[View online »](#)

Background: CD46 functions as an inhibitor of complement activation limiting the formation and activity of C3 convertases. CD46 is expressed by all nucleated cells, often as multiple isoforms on the same cells. The molecule is also expressed by sperm and may be important in the process of fertilisation.

Synonyms: TLX, MIC10

Product images:



Staining of human peripheral blood lymphocytes with MOUSE ANTI HUMAN CD46.