

Product datasheet for **SM1818R**

LOC100507703 Mouse Monoclonal Antibody [Clone ID: BB7.2]

Product data:

Product Type:	Primary Antibodies
Clone Name:	BB7.2
Applications:	FC
Recommended Dilution:	Flow Cytometry: Use 10 µl of neat antibody to label 10 ⁶ cells or 100 µl whole blood.
Reactivity:	Human
Host:	Mouse
Isotype:	IgG2b
Clonality:	Monoclonal
Immunogen:	Papain solubilised HLA-A2
Specificity:	This antibody recognises the Human HLA-A2 histocompatibility antigen. The epitope recognised by this antibody has been studied extensively and would appear to include the carboxy-terminus of the alpha-2 helix and a turn on one of the underlying beta strands. This antibody may be used for the Flow Cytometric Detection of HLA-A2 expression.
Formulation:	PBS Label: PE State: Lyophilized purified IgG fraction Stabilizer: 1% BSA and 5% Sucrose Preservative: 0.09% Sodium Azide Label: R. Phycoerythrin (RPE) Absorption emission: 488 nm / 575 nm
Reconstitution Method:	Restore with 1.0 ml distilled water.
Purification:	Affinity Chromatography on Protein G
Conjugation:	PE
Storage:	Store the antibody Prior to and after reconstitution at 2-8°C. DO NOT FREEZE. This product is photosensitive and should be protected from light.
Stability:	Shelf life: one year from despatch.



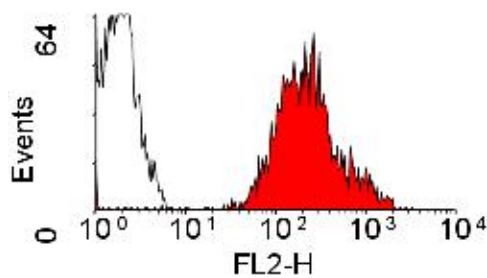
[View online »](#)

Database Link: [P01892](#)

Background: The major histocompatibility complex (MHC) is a cluster of genes that are important in the immune response to infections. In humans, this complex is referred to as the human leukocyte antigen (HLA) region. There are 3 major MHC class I proteins encoded by the HLA which are HLA A, HLA B and HLA C. The HLA A gene is part of the human HLA complex on chromosome 6 and there are a large number of variant alleles of this gene.

Synonyms: HLAA2, MHC class I antigen A-2

Product images:



SM1818R HLA-A2 antibody RPE conjugated staining of Human peripheral blood lymphocytes.