

## Product datasheet for **SM1818F**

### LOC100507703 Mouse Monoclonal Antibody [Clone ID: BB7.2]

#### Product data:

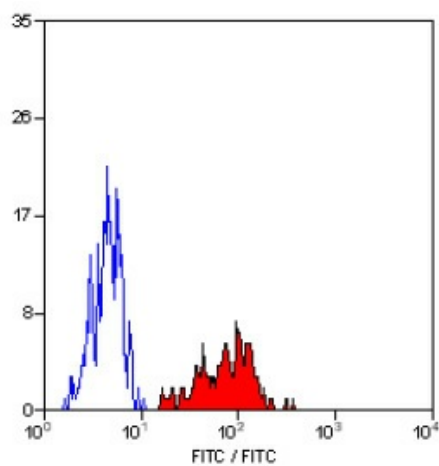
Product Type:	Primary Antibodies
Clone Name:	BB7.2
Applications:	FC
Recommended Dilution:	<b>Flow Cytometry:</b> Use 10 µl of neat-1/10 diluted antibody to label 10e6 cells or 100 µl whole blood. This antibody may be used for the flow cytometric detection of HLA-A2 expression.
Reactivity:	Human
Host:	Mouse
Isotype:	IgG2b
Clonality:	Monoclonal
Immunogen:	Papain solubilised HLA-A2. Spleen cells from immunised BALB/c mice were fused with cells of the mouse NS1 myeloma cell line.
Specificity:	This antibody recognises the HLA-A2 histocompatibility antigen. The epitope recognised by this antibody has been studied extensively and would appear to include the carboxy-terminus of the alpha-2 helix and a turn on one of the underlying beta strands.
Formulation:	PBS containing 0.09% Sodium Azide and 1% Bovine Sodium Albumin Label: FITC State: Liquid purified IgG fraction Label: Fluorescein Isothiocyanate Isomer 1
Concentration:	lot specific
Purification:	Affinity Chromatography on Protein G
Conjugation:	FITC
Storage:	Store the antibody undiluted at 2-8°C for one month or (in aliquots) at -20°C for longer. Avoid repeated freezing and thawing. This product is photosensitive and should be protected from light.
Stability:	Shelf life: one year from despatch.
Database Link:	<a href="#">P01892</a>



[View online »](#)

Synonyms: HLA A2, MHC class I antigen A-2

### Product images:



Staining of human peripheral blood monocytes with MOUSE ANTI HUMAN HLA A2: FITC.