

## Product datasheet for **SM1813**

### Apolipoprotein H (APOH) Mouse Monoclonal Antibody [Clone ID: 1D2]

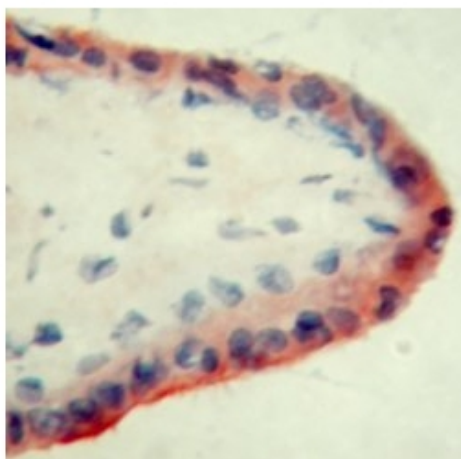
#### Product data:

Product Type:	Primary Antibodies
Clone Name:	1D2
Applications:	IHC, WB
Recommended Dilution:	<b>Western blotting.</b> <b>Immunohistochemistry on Frozen Sections.</b> <i>Recommended Positive Control:</i> Placenta tissue.
Reactivity:	Human
Host:	Mouse
Isotype:	IgG1
Clonality:	Monoclonal
Specificity:	This antibody recognises the Apolipoprotein H molecule, also known as beta 2 glycoprotein 1.
Formulation:	State: Supernatant State: Liquid Tissue Culture Supernatant containing 0.09% Sodium Azide
Conjugation:	Unconjugated
Storage:	Store undiluted at 2-8°C for one month or (in aliquots) at -20°C for longer. Avoid repeated freezing and thawing.
Stability:	Shelf life: one year from despatch.
Gene Name:	apolipoprotein H
Database Link:	<a href="#">Entrez Gene 350 Human</a> <a href="#">P02749</a>
Background:	Apolipoprotein H is expressed by placental trophoblast cells at high levels. Although the normal physiological role is not known, the protein appears to act as a co-factor for the binding of autoantibodies to phospholipids to trophoblasts, which is a process involved in the pathogenesis of recurrent miscarriage (anti phospholipid syndrome).
Synonyms:	Beta-2-glycoprotein I, Beta2GPI, B2GPI, ApoH, Apo-H, APC Inhibitor, Anticardiolipin Cofactor, B2G1



[View online »](#)

**Product images:**



SM1813 Apolipoprotein H antibody staining of Human 8.6 week placenta by Immunohistochemistry on Frozen Sections.