

Product datasheet for **SM1799PS**

CD6 Mouse Monoclonal Antibody [Clone ID: MEM-98]

Product data:

| | |
|-----------------------|--|
| Product Type: | Primary Antibodies |
| Clone Name: | MEM-98 |
| Applications: | FC, IHC, IP, WB |
| Recommended Dilution: | Flow cytometry: Recommended dilution: 2 µg/ml. Immunohistochemistry (paraffin sections): Recommended dilution: 10 µg/ml; positive tissue: spleen. Western blotting: Recommended dilution: 1-2 µg/ml; non-reducing conditions. |
| Reactivity: | Human |
| Host: | Mouse |
| Isotype: | IgG1 |
| Clonality: | Monoclonal |
| Immunogen: | Human CD6 antigen purified by immunoaffinity chromatography from HBP-ALL cells followed by preparative SDS-PAGE of non-boiled non-reduced sample (excised piece of gel corresponding to the 100 kDa zone) |
| Specificity: | The antibody reacts with CD6, a 100-130 kD single chain transmembrane glycoprotein expressed on T and B lymphocytes subsets, thymocytes, and acute lymphocytic leukemia cells. |
| Formulation: | Phosphate buffered saline (PBS) with 15 mM sodium azide, approx. pH 7.4 State: Purified State: Liquid Ig fraction |
| Concentration: | lot specific |
| Purification: | Protein-A affinity chromatography; purity: > 95% (by SDS-PAGE) |
| Conjugation: | Unconjugated |
| Storage: | Store undiluted at 2-8°C. DO NOT FREEZE! |
| Stability: | Shelf life: one year from despatch. |
| Gene Name: | CD6 molecule |



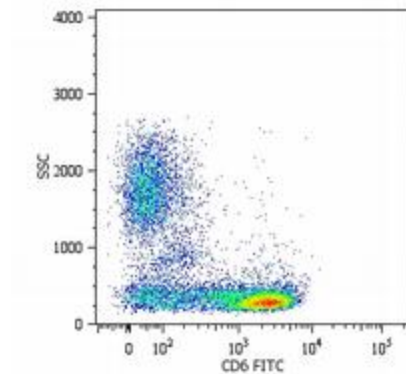
[View online »](#)

Database Link: [Entrez Gene 923 Human P30203](#)

Background: CD6, also known as T12, is a member of the scavenger receptor superfamily found on T and B cell subsets, thymocytes, and acute lymphocytic leukemia cells (ALL). CD6 interacts with its ligand CD166/ALCAM (activated leukocyte cell adhesion molecule) and serves as a coreceptor for T cell activation and stabilizer of the immunological synapse. CD6-ALCAM mediated cell adhesion is also important for T cell proliferation. CD6 may exert some its functions via association with CD5, probably by fine-tuning CD5 signaling. Ligation of CD6 has antiapoptotic role in chronic lymphocytic leukemia B cells.

Synonyms: T12, TP120

Product images:



Surface staining of human peripheral blood cells with anti-human CD6 (MEM-98) FITC