

Product datasheet for **SM1797PT**

CD45 (PTPRC) (CD45RB) Mouse Monoclonal Antibody [Clone ID: MEM-55]

Product data:

Product Type:	Primary Antibodies
Clone Name:	MEM-55
Applications:	FC, IHC, IP, WB
Recommended Dilution:	Flow Cytometry: Use 10 µl of 1/50-1/100 diluted antibody to label 1 ⁰ cells in 100 µl. Immunoprecipitation. Immunohistochemistry on Frozen Sections. Immunohistochemistry on Paraffin Sections: 1/50-1/200. Protein digestion pretreatment of paraffin sections not required. Antigen retrieval using heat treatment prior to staining of paraffin sections not required.
Reactivity:	Human, Primate, Rabbit
Host:	Mouse
Isotype:	IgG1
Clonality:	Monoclonal
Specificity:	This antibody recognizes the isoform of the leucocyte common antigen encoded by exon B and stains B cells, most T cells and monocytes. Clone MEM-55 immunoprecipitates bands of 190, 200 and 205kDa.
Formulation:	PBS State: Purified State: Liquid purified IgG fraction Preservative: 0.09% Sodium Azide
Concentration:	lot specific
Purification:	Affinity Chromatography on Protein A
Conjugation:	Unconjugated
Storage:	Store undiluted at 2-8°C for one month or (in aliquots) at -20°C for longer. Avoid repeated freezing and thawing.
Stability:	Shelf life: one year from despatch.
Gene Name:	protein tyrosine phosphatase, receptor type C



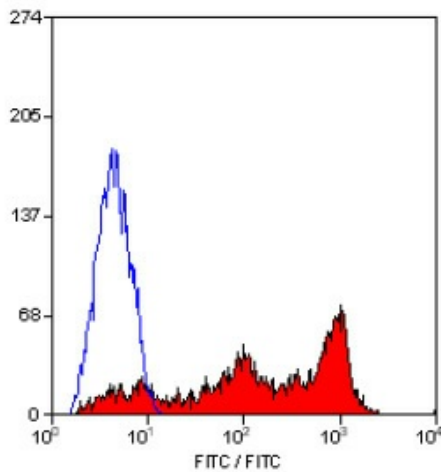
[View online »](#)

Database Link: [Entrez Gene 5788 Human P08575](#)

Background: CD45 is a family of single chain transmembrane glycoproteins consisting of at least four isoforms (220, 205, 190, 180 kDa) which share a common large intracellular domain. Their extracellular domains are heavily glycosylated. The different isoforms are produced by alternative messenger RNA splicing of three exons of a single gene on chromosome 1. CD45 is expressed on cells of the human hematopoietic lineage (including hematopoietic stem cells) with the exception of mature red cells. It is not detected on differentiated cells of other tissues. It is likely that CD45 plays an important role in signal transduction, inhibition or upregulation of various immunological functions. Antibodies recognising a common epitope on all of the isoforms are termed CD45 whilst those recognising only individual isoforms are termed CD45RA or CD45RO etc.

Synonyms: PTPRC, Leukocyte common antigen, L-CA, T200

Product images:



Staining of human peripheral blood lymphocytes with MOUSE ANTI HUMAN CD45RB ([SM1797P]).