

Product datasheet for **SM1796R**

CD45 (PTPRC) (CD45RA) Mouse Monoclonal Antibody [Clone ID: F8-11-13]

Product data:

Product Type:	Primary Antibodies
Clone Name:	F8-11-13
Applications:	FC
Recommended Dilution:	Flow Cytometry.
Reactivity:	Human
Host:	Mouse
Isotype:	IgG1
Clonality:	Monoclonal
Immunogen:	Human T lymphocytes. Spleen cells from immunised BALB/c mice were fused with cells of the mouse NS-1 myeloma cell line.
Specificity:	This antibody recognises the CD45RA cell surface antigen. Clone F8-11-13 reacts with the high molecular weight form of the leucocyte common antigen (LCA) expressed by B lymphocytes and a subset of T lymphocytes.
Formulation:	PBS, pH7.4 containing 0.09% Sodium Azide and 1% Bovine Serum Albumin Label: PE State: Lyophilized purified IgG Label: R. Phycoerythrin (RPE)
Reconstitution Method:	Restore with 1 ml distilled water.
Purification:	Affinity chromatography on protein G
Conjugation:	PE
Storage:	Prior to and following reconstitution store the antibody at 2-8°C. DO NOT FREEZE! This product is photosensitive and should be protected from light.
Stability:	Shelf life: 6 month from despatch.
Gene Name:	protein tyrosine phosphatase, receptor type C
Database Link:	Entrez Gene 5788 Human P08575

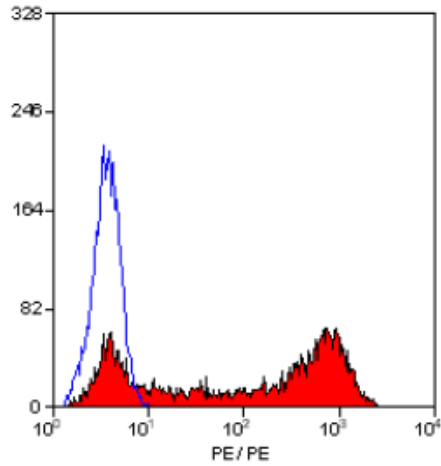


[View online »](#)

Background: CD45 is a complex molecule existing in a number of isoforms. Antibodies recognising a common epitope on all of these isoforms are termed CD45 whilst those recognising only individual isoforms are termed CD45RA or CD45RO etc.

Synonyms: PTPRC, Leukocyte common antigen, L-CA, T200

Product images:



Staining of human peripheral blood lymphocytes with MOUSE ANTI HUMAN CD45RA:RPE (SM1796R).