

## Product datasheet for **SM1796PT**

### CD45 (PTPRC) (CD45RA) Mouse Monoclonal Antibody [Clone ID: F8-11-13]

#### Product data:

Product Type:	Primary Antibodies
Clone Name:	F8-11-13
Applications:	FC, IHC
Recommended Dilution:	Immunohistology on Paraffin (1/200). Immunohistology on Frozen. Flow Cytometry (1/50-1/100): Use 10 µl of the suggested working dilution to label 10e6 cells in 100 µl.
Reactivity:	Human
Host:	Mouse
Isotype:	IgG1
Clonality:	Monoclonal
Immunogen:	Human T lymphocytes. Spleen cells from immunised BALB/c mice were fused with cells of the mouse NS1 myeloma cell line.
Specificity:	This antibody recognises the human CD45RA cell surface antigen. Clone F8-11-13 reacts with the high molecular weight form of the leucocyte common antigen (LCA) expressed by B lymphocytes and a subset of T lymphocytes.
Formulation:	PBS, pH 7.2 containing 0.09% Sodium Azide as preservative. State: Purified State: Liquid purified IgG fraction.
Concentration:	lot specific
Purification:	Affinity Chromatography on Protein G.
Conjugation:	Unconjugated
Storage:	Store the antibody undiluted at 2-8°C for one month or (in aliquots) at -20°C for longer. Avoid repeated freezing and thawing.
Stability:	Shelf life: one year from despatch.
Gene Name:	protein tyrosine phosphatase, receptor type C



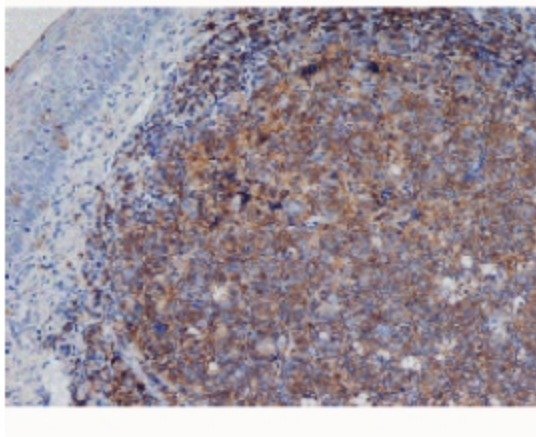
[View online »](#)

Database Link: [Entrez Gene 5788 Human P08575](#)

**Background:** CD45 is a complex molecule existing in a number of isoforms. Antibodies recognising a common epitope on all of these isoforms are termed CD45 whilst those recognising only individual isoforms are termed CD45RA or CD45RO etc.

**Synonyms:** PTPRC, Leukocyte common antigen, L-CA, T200

**Product images:**



Staining of formalin fixed, paraffin embedded human tonsil with Mouse anti Human CD45RA.