

## Product datasheet for **SM1795R**

### CD45 (PTPRC) Mouse Monoclonal Antibody [Clone ID: F-10-89-4]

#### Product data:

Product Type:	Primary Antibodies
Clone Name:	F-10-89-4
Applications:	FC
Recommended Dilution:	Flow cytometry: use 10 µl of neat antibody to label 10e6 cells or 100 µl whole blood.
Reactivity:	Human
Host:	Mouse
Isotype:	IgG2a
Clonality:	Monoclonal
Immunogen:	Human T lymphocytes
Specificity:	SM1795R recognises the human CD45 cell surface antigen, also known as the leucocyte common antigen. Clone F10-89-4 reacts with all forms of CD45 expressed by all haematopoietic cells, except erythrocytes, having a higher level of expression on lymphocytes than on granulocytes.
Formulation:	PBS, containing 1% BSA , 5% Sucrose and 0.09% Sodium Azide Label: PE State: Lyophilized purified IgG fraction Label: R. Phycoerythrin (RPE)
Reconstitution Method:	Restore with 1.0 ml distilled water.
Purification:	Protein G affinity chromatography
Conjugation:	PE
Storage:	Prior to and following reconstitution store the antibody at 2-8°C. DO NOT FREEZE! Protect from light!
Stability:	Shelf life: one year from despatch.
Gene Name:	protein tyrosine phosphatase, receptor type C
Database Link:	<a href="#">Entrez Gene 5788 Human P08575</a>



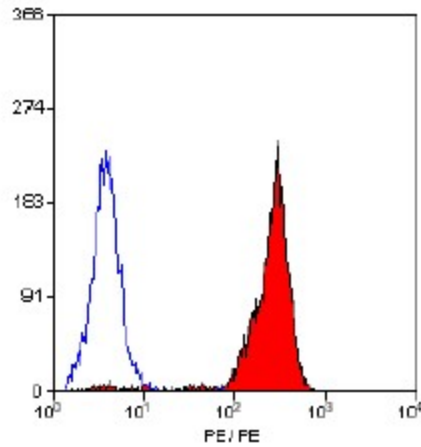
[View online »](#)

**Background:** CD45 is a complex molecule existing in a number of isoforms. Antibodies recognising a common epitope on all of these isoforms are termed CD45 whilst those recognising only individual isoforms are termed CD45RA or CD45RO etc.

**Synonyms:** PTPRC, Leukocyte common antigen, L-CA, T200

**Note:** This product is routinely tested in flow cytometry on human peripheral blood leucocytes.

**Product images:**



Staining of human peripheral blood lymphocytes with Mouse anti Human CD45 - RPE (SM1795R)