

## Product datasheet for **SM1788F**

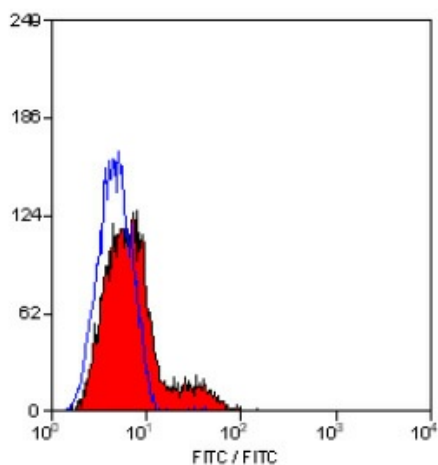
### CD23 Mouse Monoclonal Antibody [Clone ID: D3.6]

#### Product data:

Product Type:	Primary Antibodies
Clone Name:	D3.6
Applications:	FC
Recommended Dilution:	Flow Cytometry.
Reactivity:	Human
Host:	Mouse
Isotype:	IgG2a
Clonality:	Monoclonal
Specificity:	This antibody recognises CD23.
Formulation:	PBS, pH 7.4 containing 0.09% Sodium Azide as preservative and 0.1% BSA as stabilizer. Label: FITC State: Liquid purified IgG fraction. Label: Fluorescein Isothiocyanate Isomer 1
Concentration:	lot specific
Purification:	Affinity Chromatography on Protein G.
Conjugation:	FITC
Storage:	Store the antibody undiluted at 2-8°C for one month or (in aliquots) at -20°C for longer. This product is photosensitive and should be protected from light. Avoid repeated freezing and thawing.
Stability:	Shelf life: one year from despatch.
Gene Name:	Fc fragment of IgE receptor II
Database Link:	<a href="#">Entrez Gene 2208 Human P06734</a>
Background:	CD23 is a 45KD cell surface glycoprotein that acts as a low affinity receptor for IgE. CD23 is expressed by B cells in the follicular mantle but not by proliferating germinal centre cells.
Synonyms:	Fc-epsilon-RII, FCER2, CD23A, FCE2, IGEBF



[View online »](#)

**Product images:**

Staining of human peripheral blood lymphocytes with MOUSE ANTI HUMAN CD23:FITC (SM1788F/FT).