

Product datasheet for **SM1785RT**

CD21 (CR2) Mouse Monoclonal Antibody [Clone ID: LB21]

Product data:

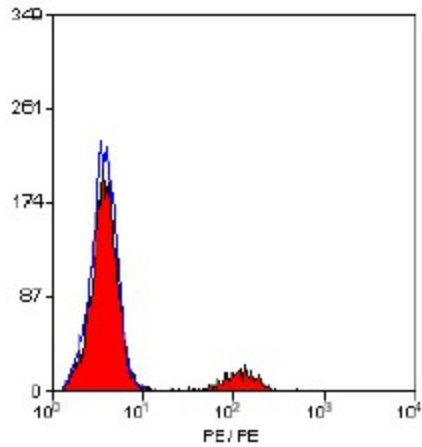
Product Type:	Primary Antibodies
Clone Name:	LB21
Applications:	FC
Recommended Dilution:	Flow cytometry: Use 10 µl of neat - 1/5 diluted antibody solution to label 10e6 cells or 100 µl whole blood.
Reactivity:	Human
Host:	Mouse
Isotype:	IgG1
Clonality:	Monoclonal
Immunogen:	Human IM9 cell line
Specificity:	The antibody recognizes the CD21 cell surface antigen.
Formulation:	PBS, pH 7.4, containing 1% BSA and 0.09% Sodium Azide as preservative Label: PE State: Lyophilized purified IgG fraction. Label: R. Phycoerythrin (RPE)
Reconstitution Method:	Restore with 1.0 ml distilled water.
Purification:	Ion Exchange Chromatography.
Conjugation:	PE
Storage:	Prior to and following reconstitution store (undiluted) at 2-8°C. DO NOT FREEZE! This product is photosensitive and should be protected from light.
Stability:	Shelf life: one year from despatch.
Gene Name:	complement component 3d receptor 2
Database Link:	Entrez Gene 1380 Human P20023
Background:	CD21 is a 145 kD glycoprotein expressed by mature B cells and follicular dendritic cells. CD21 acts as a receptor for complement components C3d, C3dg and iC3b and also for Epstein Barr Virus.



[View online »](#)

Synonyms: Complement receptor type 2, CR2, C3DR, C3d receptor, EBV Receptor, Dendritic Cell Marker

Product images:



Staining of human peripheral blood lymphocytes
with Mouse anti Human CD21-RPE
([SM1785R]/RT)