

Product datasheet for **SM1785P**

CD21 (CR2) Mouse Monoclonal Antibody [Clone ID: LB21]

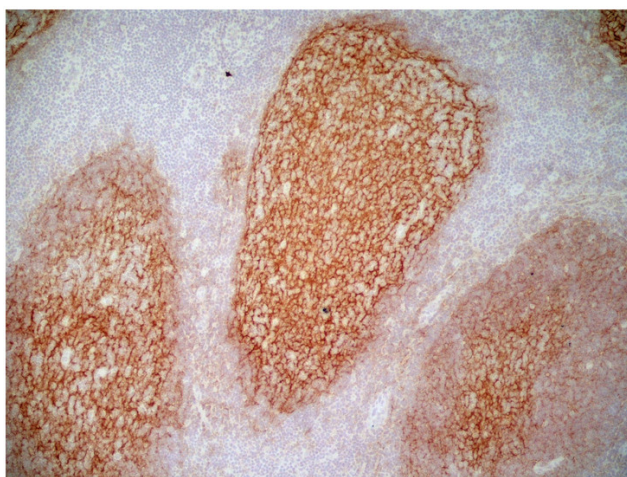
Product data:

Product Type:	Primary Antibodies
Clone Name:	LB21
Applications:	FC, IF, IHC, IP
Recommended Dilution:	Flow Cytometry: Use 10 µl of neat antibody to label 10 ⁶ cells or 100 µl human whole blood. Immunoprecipitation. Immunohistochemistry on Frozen Sections: 1/10-1/100. The epitope recognised by this antibody is reported to be sensitive to formaldehyde fixation and tissue processing. We recommends the use of acetone fixation for frozen sections. Recommended Positive Control: Lymph node tissue.
Reactivity:	Bovine, Feline, Goat, Human, Mink, Sheep
Host:	Mouse
Isotype:	IgG1
Clonality:	Monoclonal
Immunogen:	Human IM9 cell line. Spleen cells from immunised BALB/c mice were fused with cells of the mouse Sp2/0 myeloma cell line.
Specificity:	This antibody is a 14kD cell surface glycoprotein expressed by mature B cells and by follicular dendritic cells. The molecule acts as a receptor for complement components C3d, C3dg and iC3b, as well as for Epstein Barr Virus. It forms part of a large signal transduction complex in association with CD19.
Formulation:	PBS, pH 7.4 State: Purified State: Liquid purified IgG fraction Stabilizer: 1% BSA Preservative: 0.09% Sodium Azide
Concentration:	lot specific
Purification:	Ion Exchange Chromatography
Conjugation:	Unconjugated

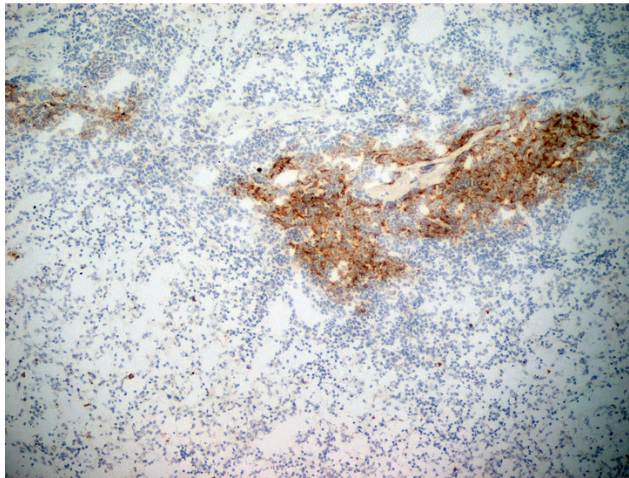


[View online »](#)

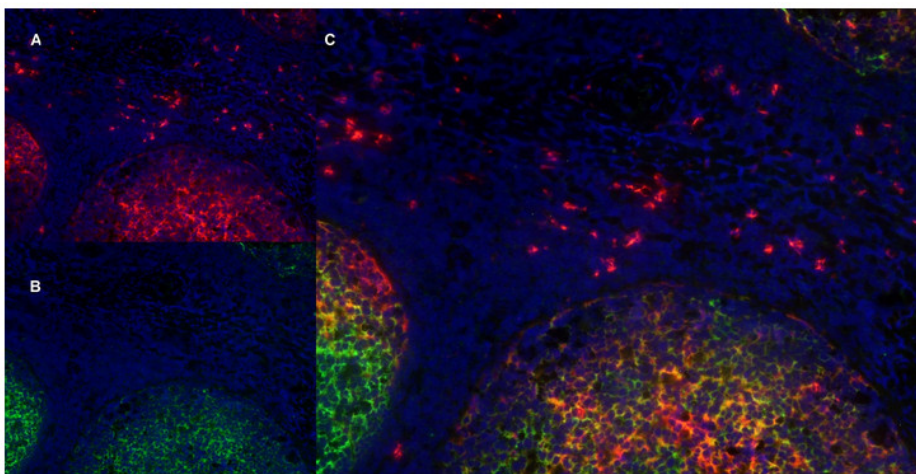
Storage:	Store undiluted at 2-8°C for one month or (in aliquots) at -20°C for longer. Avoid repeated freezing and thawing.
Stability:	Shelf life: one year from despatch.
Gene Name:	complement component 3d receptor 2
Database Link:	Entrez Gene 1380 Human P20023
Background:	CD21 also known as complement receptor 2 (CR2), C3d receptor or EBV receptor is a 140 kDa protein. CD21 is a glycosylated type I transmembrane protein consisting of an extracellular face of a series of 15 or 16 CCP domains. CD21 is the receptor for complement components C3d and iC3b as well as the Epstein-Barr virus (EBV) glycoprotein gp350/220. The soluble CD21 (sCD21) was shown to efficiently trigger CD23 signalling pathways in human monocytes. By inducing release of proinflammatory cytokines and upregulating expression of molecules involved in antigen presentation, sCD21 modulates critical monocyte functions that may be relevant to allergic and inflammatory disorders.
Synonyms:	Complement receptor type 2, CR2, C3DR, C3d receptor, EBV Receptor, Dendritic Cell Marker

Product images:

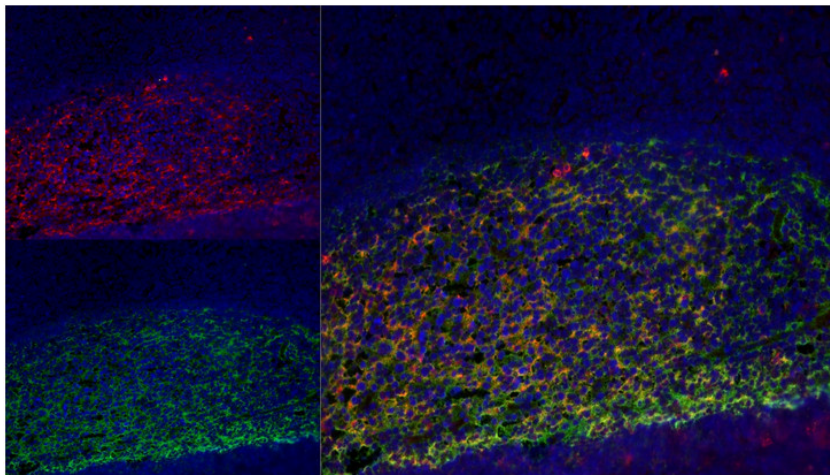
Immunoperoxidase staining of human tonsil cryosection using Mouse anti Human CD21 antibody followed by HISTAR detection system. Medium power.



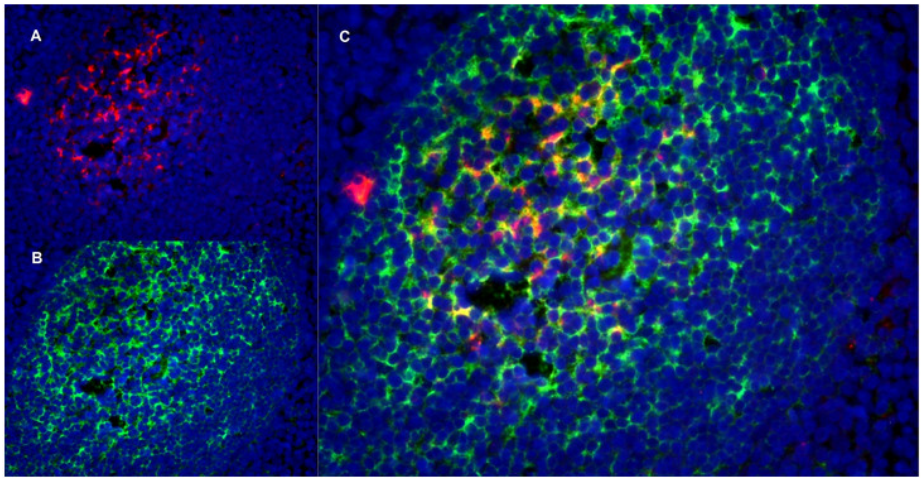
Immunoperoxidase staining of human spleen cryosection using Mouse anti Human CD21 antibody followed by HISTAR detection system. Low power.



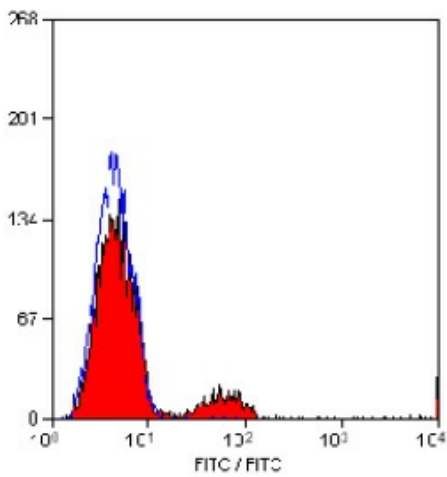
Immunofluorescence staining of human tonsil cryosection with Mouse anti Human CD11b antibody, clone ICRF44, red in A and Mouse anti Human CD21, green in B. C is the merged image with nuclei counterstained blue using DAPI. medium power.



Immunofluorescence image of human tonsil cryosection stained with Sheep anti Human LOX-1 antibody in red and with Mouse anti Human CD21 antibody in green. Nuclei are stained blue using DAPI. Merged image on right.



Immunofluorescence staining of human tonsil cryosection using Mouse anti Human CD1a antibody, red in A and Mouse anti Human CD21, green in B. C is the merged image with nuclei counterstained blue using DAPI. High power.



Staining of human peripheral blood lymphocytes with Mouse Anti Human CD21 Antibody.