

## Product datasheet for **SM1784RT**

### CD8A Mouse Monoclonal Antibody [Clone ID: LT8]

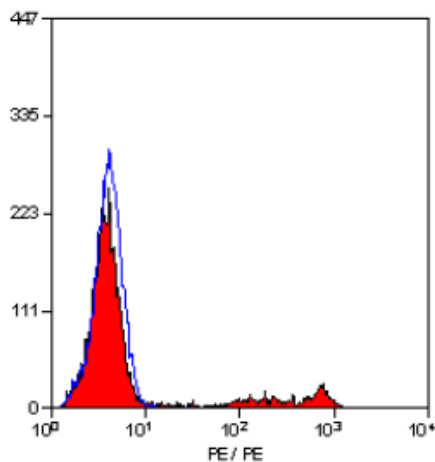
#### Product data:

Product Type:	Primary Antibodies
Clone Name:	LT8
Applications:	FC
Recommended Dilution:	Flow Cytometry.
Reactivity:	Human, Monkey
Host:	Mouse
Isotype:	IgG1
Clonality:	Monoclonal
Immunogen:	Normal human peripheral blood lymphocytes. Spleen cells from immunised BALB/c mice were fused with cells of the mouse X63.653 myeloma cell line.
Specificity:	This antibody recognises the alpha-chain of the CD8 antigen.
Formulation:	PBS, pH 7.4 containing 0.09% Sodium Azide as preservative and 1% BSA as stabilizer. Label: PE State: Lyophilized purified IgG fraction. Label: R. Phycoerythrin (RPE)
Reconstitution Method:	Restore with 1 ml distilled water.
Purification:	Ion Exchange Chromatography.
Conjugation:	PE
Storage:	Prior to and following reconstitution store the antibody undiluted at 2-8°C. This product is photosensitive and should be protected from light. <b>DO NOT FREEZE!</b>
Stability:	Shelf life: one year from despatch.
Gene Name:	CD8a molecule
Database Link:	<a href="#">Entrez Gene 925 Human P01732</a>
Background:	CD8 is a 32kD glycoprotein expressed by the cytotoxic suppressor subset of T cells and weakly by NK cells. CD8 functions as a receptor for MHC Class I molecules.



[View online »](#)

<b>Synonyms:</b>	CD8 alpha chain, CD8A, MAL
<b>Protein Families:</b>	Adult stem cells, Druggable Genome, ES Cell Differentiation/IPS, Secreted Protein, Transmembrane
<b>Protein Pathways:</b>	Antigen processing and presentation, Cell adhesion molecules (CAMs), Hematopoietic cell lineage, Primary immunodeficiency, T cell receptor signaling pathway

**Product images:**

Staining of human peripheral blood lymphocytes with MOUSE ANTI HUMAN CD8:RPE (SM1784R).