

## Product datasheet for **SM1784PT**

### CD8A Mouse Monoclonal Antibody [Clone ID: LT8]

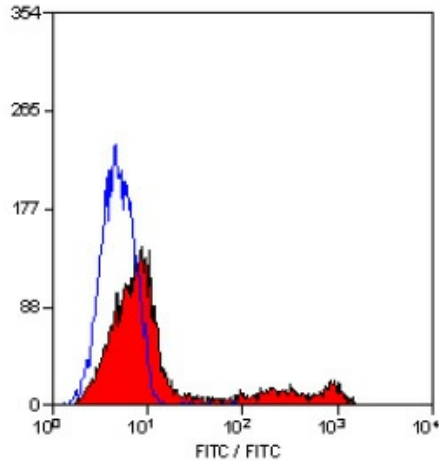
#### Product data:

Product Type:	Primary Antibodies
Clone Name:	LT8
Applications:	FC, IHC, IP
Recommended Dilution:	Flow cytometry: Use 10 µl of 1/50-1/100 diluted antibody to label 10e6 cells or 100 µl human whole blood. Immunoprecipitation. Immunohistochemistry on Frozen Sections.
Reactivity:	Human, Monkey
Host:	Mouse
Isotype:	IgG1
Clonality:	Monoclonal
Immunogen:	Normal human peripheral blood lymphocytes. Spleen cells from immunised BALB/c mice were fused with cells of the mouse X63.653 myeloma cell line.
Specificity:	This antibody recognises the alpha-chain of the CD8 antigen.
Formulation:	PBS, pH 7.4 containing 0.09% Sodium Azide as preservative. State: Purified State: Liquid purified IgG fraction.
Concentration:	lot specific
Purification:	Ion Exchange Chromatography.
Conjugation:	Unconjugated
Storage:	Store the antibody undiluted at 2-8°C for one month or (in aliquots) at -20°C for longer. Avoid repeated freezing and thawing.
Stability:	Shelf life: one year from despatch.
Gene Name:	CD8a molecule
Database Link:	<a href="#">Entrez Gene 925 Human P01732</a>



[View online »](#)

<b>Background:</b>	CD8 is a 32kD glycoprotein expressed by the cytotoxic suppressor subset of T cells and weakly by NK cells. CD8 functions as a receptor for MHC Class I molecules.
<b>Synonyms:</b>	CD8 alpha chain, CD8A, MAL
<b>Protein Families:</b>	Adult stem cells, Druggable Genome, ES Cell Differentiation/IPS, Secreted Protein, Transmembrane
<b>Protein Pathways:</b>	Antigen processing and presentation, Cell adhesion molecules (CAMs), Hematopoietic cell lineage, Primary immunodeficiency, T cell receptor signaling pathway

**Product images:**

Staining of human peripheral blood lymphocytes with MOUSE ANTI HUMAN CD8.