

## Product datasheet for **SM1784F**

### CD8A Mouse Monoclonal Antibody [Clone ID: LT8]

#### Product data:

Product Type:	Primary Antibodies
Clone Name:	LT8
Applications:	FC
Recommended Dilution:	<b>Flow Cytometry:</b> Use 10 µl of Neat-1/5 diluted antibody to label 10e6 cells or cells or 100 µl Human whole blood.
Reactivity:	Human
Host:	Mouse
Isotype:	IgG1
Clonality:	Monoclonal
Immunogen:	Normal Human peripheral blood lymphocytes.
Specificity:	This antibody recognises the CD8 cell surface glycoprotein.
Formulation:	PBS, pH 7.4 containing 0.09% Sodium Azide as preservative and 1% BSA as stabilizer Label: FITC State: Liquid purified IgG fraction. Label: Fluorescein Isothiocyanate Isomer 1
Concentration:	lot specific
Purification:	Ion Exchange Chromatography.
Conjugation:	FITC
Storage:	Store the antibody undiluted at 2-8°C for one month or (in aliquots) at -20°C for longer. This product is photosensitive and should be protected from light. Avoid repeated freezing and thawing.
Stability:	Shelf life: one year from despatch.
Gene Name:	CD8a molecule
Database Link:	<a href="#">Entrez Gene 925 Human P01732</a>



[View online »](#)

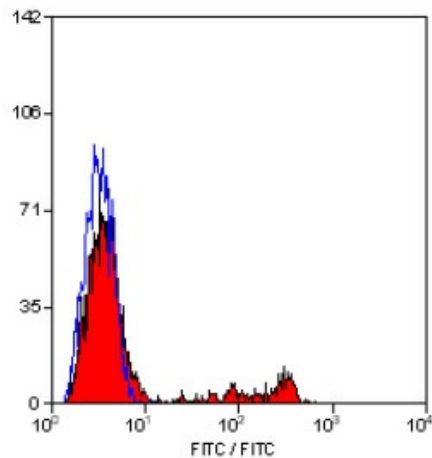
**Background:** CD8 is expressed by a subset of peripheral blood T cells which express cytotoxic/suppressor activity. It is also expressed weakly on NK cells. The CD8 antigen is a co-receptor for MHC Class I in conjunction with the T cell receptor, and is important in the selection process of CD8+ MHC Class I restricted T cells.

**Synonyms:** CD8 alpha chain, CD8A, MAL

**Protein Families:** Adult stem cells, Druggable Genome, ES Cell Differentiation/IPS, Secreted Protein, Transmembrane

**Protein Pathways:** Antigen processing and presentation, Cell adhesion molecules (CAMs), Hematopoietic cell lineage, Primary immunodeficiency, T cell receptor signaling pathway

### Product images:



Staining of human peripheral blood lymphocytes with Mouse Anti Human CD8-FITC.