

## Product datasheet for **SM1784B**

### CD8A Mouse Monoclonal Antibody [Clone ID: LT8]

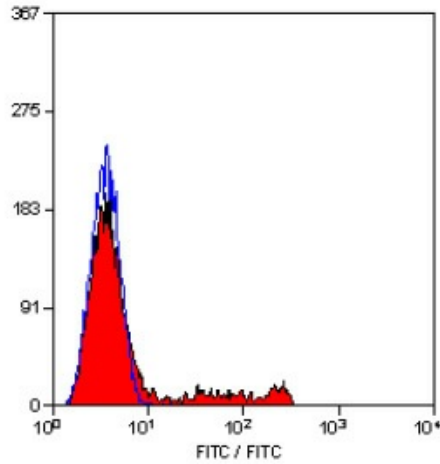
#### Product data:

Product Type:	Primary Antibodies
Clone Name:	LT8
Applications:	FC
Recommended Dilution:	Flow Cytometry: Use 10 µl of Neat-1/10 diluted antibody to label 10e6 cells or 100µl human whole blood.
Reactivity:	Human
Host:	Mouse
Isotype:	IgG1
Clonality:	Monoclonal
Immunogen:	Normal human peripheral blood lymphocytes. Spleen cells from immunised BALB/c mice were fused with cells of the mouse X63.653 myeloma cell line.
Specificity:	This antibody recognises the CD8 cell surface glycoprotein.
Formulation:	PBS, pH 7.4 containing 0.09% Sodium Azide as preservative and 1% BSA as stabilizer. Label: Biotin State: Liquid purified IgG fraction.
Concentration:	lot specific
Purification:	Ion exchange chromatography
Conjugation:	Biotin
Storage:	Store the antibody undiluted at 2-8°C for one month or (in aliquots) at -20°C for longer. Avoid repeated freezing and thawing.
Stability:	Shelf life: one year from despatch.
Gene Name:	CD8a molecule
Database Link:	<a href="#">Entrez Gene 925 Human P01732</a>
Background:	CD8 is expressed by a subset of peripheral blood T cells which express cytotoxic/suppressor activity. It is also expressed weakly on NK cells. The CD8 antigen is a co-receptor for MHC Class I in conjunction with the T cell receptor, and is important in the selection process of CD8+ MHC Class I restricted T cells.



[View online »](#)

<b>Synonyms:</b>	CD8 alpha chain, CD8A, MAL
<b>Protein Families:</b>	Adult stem cells, Druggable Genome, ES Cell Differentiation/IPS, Secreted Protein, Transmembrane
<b>Protein Pathways:</b>	Antigen processing and presentation, Cell adhesion molecules (CAMs), Hematopoietic cell lineage, Primary immunodeficiency, T cell receptor signaling pathway

**Product images:**

Staining of human peripheral blood lymphocytes with Mouse Anti Human CD8-Biotin.