

Product datasheet for **SM1784APCT**

CD8A Mouse Monoclonal Antibody [Clone ID: LT8]

Product data:

Product Type:	Primary Antibodies
Clone Name:	LT8
Applications:	FC
Recommended Dilution:	Flow Cytometry: Use 10 ul of neat antibody to label 10e6 cells or 100 ul human whole blood.
Reactivity:	Human, Monkey
Host:	Mouse
Isotype:	IgG1
Clonality:	Monoclonal
Immunogen:	Normal human peripheral blood lymphocytes. Spleen cells from immunised BALB/c mice were fused with cells of the mouse X63.653 myeloma cell line.
Specificity:	This antibody recognises the alpha-chain of the CD8 antigen, a 32kD glycoprotein expressed by the cytotoxic suppressor subset of T cells and weakly by NK cells.
Formulation:	PBS, pH 7.4 containing 0.09% Sodium Azide as preservative and 1% BSA as stabilizer. Label: APC State: Lyophilized purified IgG fraction. Label: Allophycocyanin
Reconstitution Method:	Restore with 1 ml distilled water
Purification:	Ion Exchange Chromatography
Conjugation:	APC
Storage:	Prior to and following reconstitution store the antibody undiluted at 2-8°C. DO NOT FREEZE!
Stability:	Shelf life: one year from despatch.
Gene Name:	CD8a molecule
Database Link:	Entrez Gene 925 Human P01732



[View online »](#)

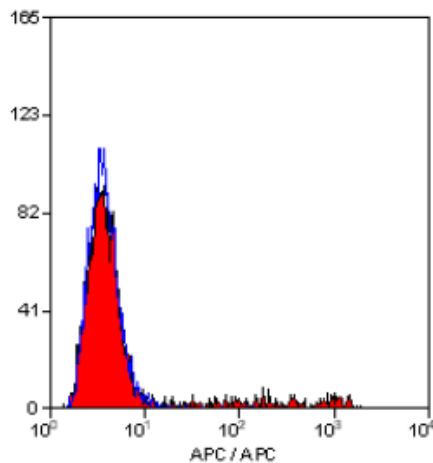
Background: The CD8 antigen is a cell surface glycoprotein found on most cytotoxic T lymphocytes that mediates efficient cell to cell interactions within the immune system. The CD8 antigen, acting as a coreceptor, and the T cell receptor on the T lymphocyte recognize antigen displayed by an antigen presenting cell in the context of class I MHC molecules. The functional coreceptor is either a homodimer composed of two alpha chains, or a heterodimer composed of one alpha and one beta chain. Both alpha and beta chains share significant homology to immunoglobulin variable light chains.

Synonyms: CD8 alpha chain, CD8A, MAL

Protein Families: Adult stem cells, Druggable Genome, ES Cell Differentiation/IPS, Secreted Protein, Transmembrane

Protein Pathways: Antigen processing and presentation, Cell adhesion molecules (CAMs), Hematopoietic cell lineage, Primary immunodeficiency, T cell receptor signaling pathway

Product images:



Staining of human peripheral blood lymphocytes with Mouse Anti Human CD8-APC ([SM1784APC]).