

Product datasheet for **SM1783R**

CD2 Mouse Monoclonal Antibody [Clone ID: LT2]

Product data:

Product Type:	Primary Antibodies
Clone Name:	LT2
Applications:	FC
Recommended Dilution:	Flow Cytometry.
Reactivity:	Human
Host:	Mouse
Isotype:	IgG2b
Clonality:	Monoclonal
Immunogen:	Normal human peripheral blood lymphocytes. Spleen cells from immunised BALB/c mice were fused with cells of the mouse X63.653 myeloma cell line.
Specificity:	This antibody recognises the CD2 cell surface glycoprotein, a 50kD molecule expressed by T cells, NK cells and thymocytes.
Formulation:	PBS, pH 7.4 containing 0.09% Sodium Azide as preservative, 1% BSA as stabilizer and Inert Bulking Reagent. Label: PE State: Lyophilized purified IgG fraction. Label: R. Phycoerythrin (RPE)
Reconstitution Method:	Restore with 1 ml distilled water.
Purification:	Affinity Chromatography on Protein A
Conjugation:	PE
Storage:	Prior to and following reconstitution store the antibody undiluted at 2-8°C. DO NOT FREEZE! This product is photosensitive and should be protected from light.
Stability:	Shelf life: one year from despatch.
Gene Name:	CD2 molecule
Database Link:	Entrez Gene 914 Human P06729



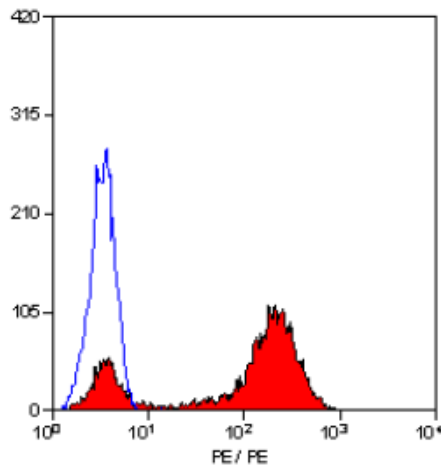
[View online »](#)

Background:

CD2 is a surface antigen of the human T lymphocyte lineage that is expressed on all peripheral blood T cells. It is one of the earliest T cell markers, being present on more than 95% of thymocytes; it is also found on some natural killer cells but not on B lymphocytes. CD2 interacts with lymphocyte function associated antigen (LFA3) and CD48/BCM1 to mediate adhesion between T cells and other cell types. CD2 is implicated in the triggering of T cells, the cytoplasmic domain is implicated in the signaling function. It is useful for the identification of lymphomas and leukaemias of T cell origin.

Synonyms:

SRBC, Erythrocyte receptor, LFA-2, LFA-3 receptor, Rosette receptor

Product images:

Staining of human peripheral blood lymphocytes with Mouse Anti Human CD2-RPE (SM1783R/RT).