

Product datasheet for **SM1783PS**

CD2 Mouse Monoclonal Antibody [Clone ID: LT2]

Product data:

Product Type:	Primary Antibodies
Clone Name:	LT2
Applications:	FC, IHC, IP
Recommended Dilution:	Immunoprecipitation. Flow Cytometry: Use 10 µl of 1/50-1/100 diluted antibody to label 10e6 cells in 100 µl. Immunohistochemistry on Frozen Sections: 1/200-1/400. Recommended Positive Control Tissue: Human Tonsil.
Reactivity:	Human
Host:	Mouse
Isotype:	IgG2b
Clonality:	Monoclonal
Immunogen:	Normal human peripheral blood lymphocytes. Spleen cells from immunised BALB/c mice were fused with cells of the mouse X63.653 myeloma cell line.
Specificity:	This antibody is a single chain transmembrane glycoprotein of 50kD. This antibody inhibits NK cell mediated cytotoxicity, and ConA and PHA mediated blast transformation.
Formulation:	PBS, pH 7.4 containing 0.09% Sodium Azide as preservative. State: Purified State: Liquid purified IgG fraction.
Concentration:	lot specific
Purification:	Affinity Chromatography on Protein A
Conjugation:	Unconjugated
Storage:	Store the antibody undiluted at 2-8°C for one month or (in aliquots) at -20°C for longer. Avoid repeated freezing and thawing.
Stability:	Shelf life: one year from despatch.
Gene Name:	CD2 molecule
Database Link:	Entrez Gene 914 Human P06729

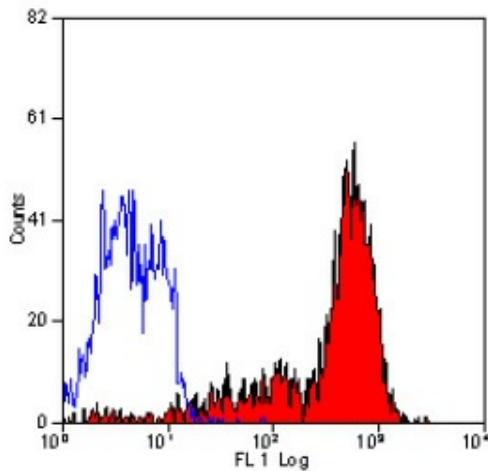


[View online »](#)

Background: CD2 is expressed by T cells, NK cells and thymocytes. CD2 is a receptor for CD58 (LFA-3), and is important in mediating the interaction between T cells and target cells or antigen presenting cells.

Synonyms: SRBC, Erythrocyte receptor, LFA-2, LFA-3 receptor, Rosette receptor

Product images:



Staining of human peripheral blood lymphocytes with Mouse Anti Human CD2.