

## Product datasheet for **SM1783F**

### CD2 Mouse Monoclonal Antibody [Clone ID: LT2]

#### Product data:

Product Type:	Primary Antibodies
Clone Name:	LT2
Applications:	FC
Recommended Dilution:	Flow cytometry.
Reactivity:	Human
Host:	Mouse
Isotype:	IgG2b
Clonality:	Monoclonal
Immunogen:	Normal human peripheral blood lymphocytes. Spleen cells from immunised BALB/c mice were fused with cells of the mouse X63.653 myeloma cell line.
Specificity:	This antibody is a single chain transmembrane glycoprotein of 50kD. This antibody inhibits NK cell mediated cytotoxicity, and ConA and PHA mediated blast transformation.
Formulation:	PBS, pH7.4 containing 0.09% Sodium Azide and 1% Bovine Serum Albumin Label: FITC State: Liquid purified IgG Label: Fluorescein Isothiocyanate Isomer 1
Concentration:	lot specific
Purification:	Affinity chromatography on Protein A
Conjugation:	FITC
Storage:	Store the antibody undiluted at 2-8°C for one month or (in aliquots) at -20°C for longer. Avoid repeated freezing and thawing. This product is photosensitive and should be protected from light.
Stability:	Shelf life: one year from despatch.
Gene Name:	CD2 molecule
Database Link:	<a href="#">Entrez Gene 914 Human P06729</a>

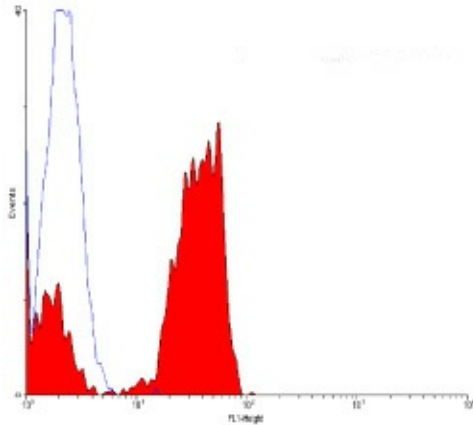


[View online »](#)

**Background:** CD2 is expressed by T cells, NK cells and thymocytes. CD2 is a receptor for CD58 (LFA-3), and is important in mediating the interaction between T cells and target cells or antigen presenting cells.

**Synonyms:** SRBC, Erythrocyte receptor, LFA-2, LFA-3 receptor, Rosette receptor

**Product images:**



staining lymphocytes.