

## Product datasheet for **SM1768T**

### CD59 Rat Monoclonal Antibody [Clone ID: YTH53.1]

#### Product data:

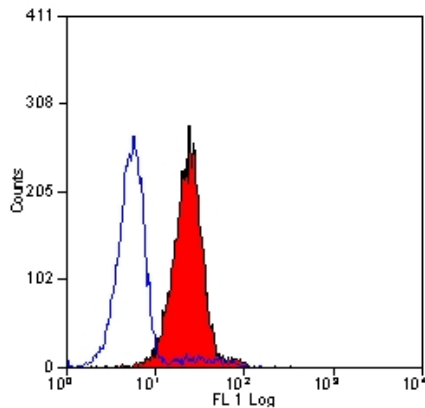
<b>Product Type:</b>	Primary Antibodies
<b>Clone Name:</b>	YTH53.1
<b>Applications:</b>	FC, IHC, WB
<b>Recommended Dilution:</b>	Western Blot. Flow Cytometry: Use 10 µl of 1/50-1/100 diluted antibody to label 10e6 cells in 100 µl. Immunohistochemistry on Frozen Sections. Immunohistochemistry on Paraffin Sections (1/5-1/10): This product requires antigen retrieval using heat treatment prior to staining of paraffin sections. Sodium citrate buffer pH 6.0 is recommended for this purpose. Positive Control Tissue: Placenta.
<b>Reactivity:</b>	Human
<b>Host:</b>	Rat
<b>Isotype:</b>	IgG2b
<b>Clonality:</b>	Monoclonal
<b>Immunogen:</b>	Human Peripheral Blood T cells. Spleen cells from an immunised DA rat were fused with cells of the Y3/Ag1.2.3 rat myeloma line.
<b>Specificity:</b>	This antibody recognises the human CD59 cell surface antigen, an 18-20kD GPI linked glycoprotein broadly expressed by human leucocytes and erythrocytes. Clone YTH53.1 has been shown to block the normal function of CD59. Removal of sodium azide is recommended prior to use in functional assays. CD59 is expressed by erythrocytes, and therefore staining in whole blood systems requires a higher concentration of antibody.
<b>Formulation:</b>	PBS, pH 7.4 containing 0.09% Sodium Azide as preservative. State: Purified State: Liquid purified IgG fraction.
<b>Concentration:</b>	lot specific
<b>Purification:</b>	Affinity Chromatography on Protein G.
<b>Conjugation:</b>	Unconjugated



[View online »](#)

<b>Storage:</b>	Store the antibody undiluted at 2-8°C for one month or (in aliquots) at -20°C for longer. Avoid repeated freezing and thawing.
<b>Stability:</b>	Shelf life: one year from despatch.
<b>Gene Name:</b>	CD59 molecule
<b>Database Link:</b>	<a href="#">Entrez Gene 966 Human P13987</a>
<b>Background:</b>	CD59, an LY6 like protein expressed in human lymphoid cells, regulates the action of the complement membrane attack complex on homologous cells. It is a potent inhibitor of the complement membrane attack complex action. It acts by binding to the C8 and/or C9 complements of the membrane attack complex, thereby preventing incorporation of the multiple copies of C9 required for complete formation of the osmolytic pore. This inhibitor appears to be species-specific. CD59 is also involved in signal transduction for T-cell activation complexed to a protein tyrosine kinase.
<b>Synonyms:</b>	MAC-inhibitory protein, Protectin, MEM43 antigen, MIC11, MIN1, MIN2, MIN3, MSK21, MACIF, MAC-IP, MIRL, HRF20, HRF-20

### Product images:



Staining of human peripheral blood granulocytes with Rat Anti Human CD59.