

Product datasheet for **SM1768**

CD59 Rat Monoclonal Antibody [Clone ID: YTH53.1]

Product data:

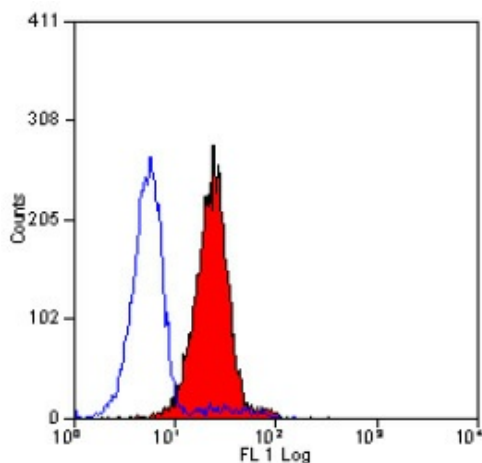
Product Type:	Primary Antibodies
Clone Name:	YTH53.1
Applications:	FC, IHC, WB
Recommended Dilution:	Western Blot. Flow Cytometry: Use 10 µl of 1/50-1/100 diluted antibody to label 10e6 cells in 100 µl. Immunohistochemistry on Frozen Sections. Immunohistochemistry on Paraffin Sections: 1/5-1/10. This product requires antigen retrieval using heat treatment prior to staining of paraffin sections; Sodium citrate buffer pH 6.0 is recommended for this purpose. <i>Recommended Positive Control:</i> Placenta. Removal of sodium azide is recommended prior to use in functional assays.
Reactivity:	Human
Host:	Rat
Isotype:	IgG2b
Clonality:	Monoclonal
Immunogen:	Human Peripheral Blood T cells. Spleen cells from an immunised DA rat were fused with cells of the Y3/Ag1.2.3 rat myeloma line.
Specificity:	This antibody recognises the CD59 cell surface antigen. Clone YTH53.1 has been shown to block the normal function of CD59.
Formulation:	PBS containing 0.09% Sodium Azide as preservative. State: Purified State: Liquid purified IgG fraction.
Concentration:	lot specific
Purification:	Affinity Chromatography on Protein G
Conjugation:	Unconjugated
Storage:	Store the antibody undiluted at 2-8°C for one month or (in aliquots) at -20°C for longer. Avoid repeated freezing and thawing.
Stability:	Shelf life: one year from despatch.



[View online »](#)

Gene Name:	CD59 molecule
Database Link:	Entrez Gene 966 Human P13987
Background:	CD59 is an 18-20kD GPI linked glycoprotein broadly expressed by human leucocytes and erythrocytes. CD59 is expressed by erythrocytes, and therefore staining in whole blood systems requires a higher concentration of antibody.
Synonyms:	MAC-inhibitory protein, Protectin, MEM43 antigen, MIC11, MIN1, MIN2, MIN3, MSK21, MACIF, MAC-IP, MIRL, HRF20, HRF-20

Product images:



Staining of human peripheral blood granulocytes with RAT ANTI HUMAN CD59.