

Product datasheet for **SM1742F**

B7-1 (CD80) Mouse Monoclonal Antibody [Clone ID: MEM-233]

Product data:

Product Type:	Primary Antibodies
Clone Name:	MEM-233
Applications:	FC
Recommended Dilution:	Flow Cytometry analysis of human blood cells using 20 µl reagent / 100 µl of whole blood or 10 ⁶ cells in a suspension. The content of a vial (2 ml) is sufficient for 100 tests.
Reactivity:	Human
Host:	Mouse
Isotype:	IgG1
Clonality:	Monoclonal
Immunogen:	Extracellular domain of human CD80 fused to human IgG1(Fc)
Specificity:	This antibody reacts with CD80 (B7-1), a 60 kDa single chain type I glycoprotein of immunoglobulin supergene family, expressed on professional antigen-presenting cells, such as dendritic cells, macrophages or activated B lymphocytes.
Formulation:	PBS containing 15 mM sodium azide Label: FITC State: Liquid purified Ig fraction Label: Conjugated with Fluorescein isothiocyanate (FITC) under optimum conditions. The reagent is free of unconjugated FITC and adjusted for direct use.
Conjugation:	FITC
Storage:	Store undiluted at 2-8°C. DO NOT FREEZE! This product is photosensitive and should be protected from light.
Stability:	Shelf life: one year from despatch.
Gene Name:	CD80 molecule
Database Link:	Entrez Gene 941 Human P33681



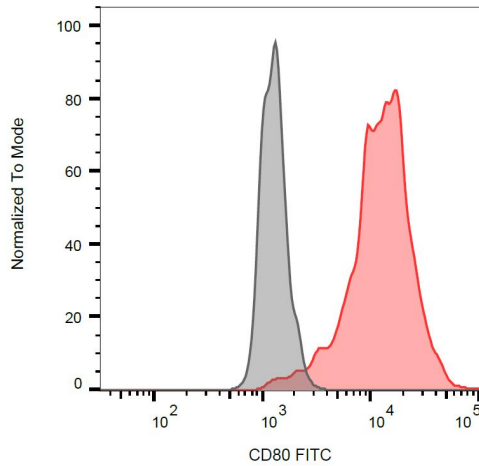
[View online »](#)

Background:

CD80 (B7-1) and CD86 (B7-2) are ligands of T cell critical costimulatory molecule CD28 and of an inhibitory receptor CTLA-4 (CD152). The both B7 molecules are expressed on professional antigen-presenting cells and are essential for T cell activation, the both molecules can also substitute for each other in this process. The question what are the differences in CD80 and CD86 competency has not been fully elucidated yet; there are still conflicts in results about their respective roles in initiation or sustaining of the T cell immune response.

Synonyms:

CD28LG, CD28LG1, LAB7, BB1, B7.1, B7-1

Product images:

Surface staining of CD80-transfected P815 cells with anti-human CD80 (MEM-233) FITC.